

وزارة الزراعة و الإصلاح الزراعي  
**NAPC**  
المركز الوطني للسياسات الزراعية

8

بالتعاون مع

مشروع GCP/SYR/006/ITA



منظمة الأغذية  
والزراعة للأمم المتحدة



التعاون  
الإيطالي



وزارة الزراعة  
و الإصلاح الزراعي



(NAPC)

GCP/SYR/006/ITA – Phase II,

(MAAR)

8

(GAFTA)

- - - - -

- - - - -

- - - - -

- - - - -



1....	-	-
2 .....		. 1-1
2 .....		2-1
2 .....		1-2-1
3 .....		2-2-1
4 .....		3-2-1
4 .....		4-2-1
5 .....		5-2-1
5 .....		6-2-1
6 .....		3-1
9.....	-	
10.....		1-2
10.....		1-1-2
11.....		2-1-2
11.....		3-1-2
12.....		4-1-2
13.....		2-2
15 .....	-	
15.....		1-3
17.....		2-3
18.....		3-3
18.....		4-3
19.....		5-3
20.....		6-3
22.....		7-3
22.....		8-3
25 .....	-	
26.....		1-4
28.....		2-4
31..... (GAFTA)		3-4
31.....		1.3.4

34.....( - )	2-3-4
38.....	3-3-4
<b>39.....</b>	<b>4-4</b>
39.....	1-4-4
40.....	2-4-4
<b>41.....</b>	<b>5-4</b>
41.....	1-5-4
43..... ( ) 2002-2000	2-5-4
<b>46.....</b>	<b>6-4</b>
46.....	1-6-4
47.....	2-6-4
<b>49 .....</b>	<b>-</b>
49.....	1-5
51.....	2-5
52.....	3-5
55 .....	
63 .....	
99 .....	

GAFTA

•  
•  
•

2004                      2003

.1

GAFTA                      :

(MPI)

:

.1

.2

.3

.4

-                      )

(                      -

:

-                      -                      :

:

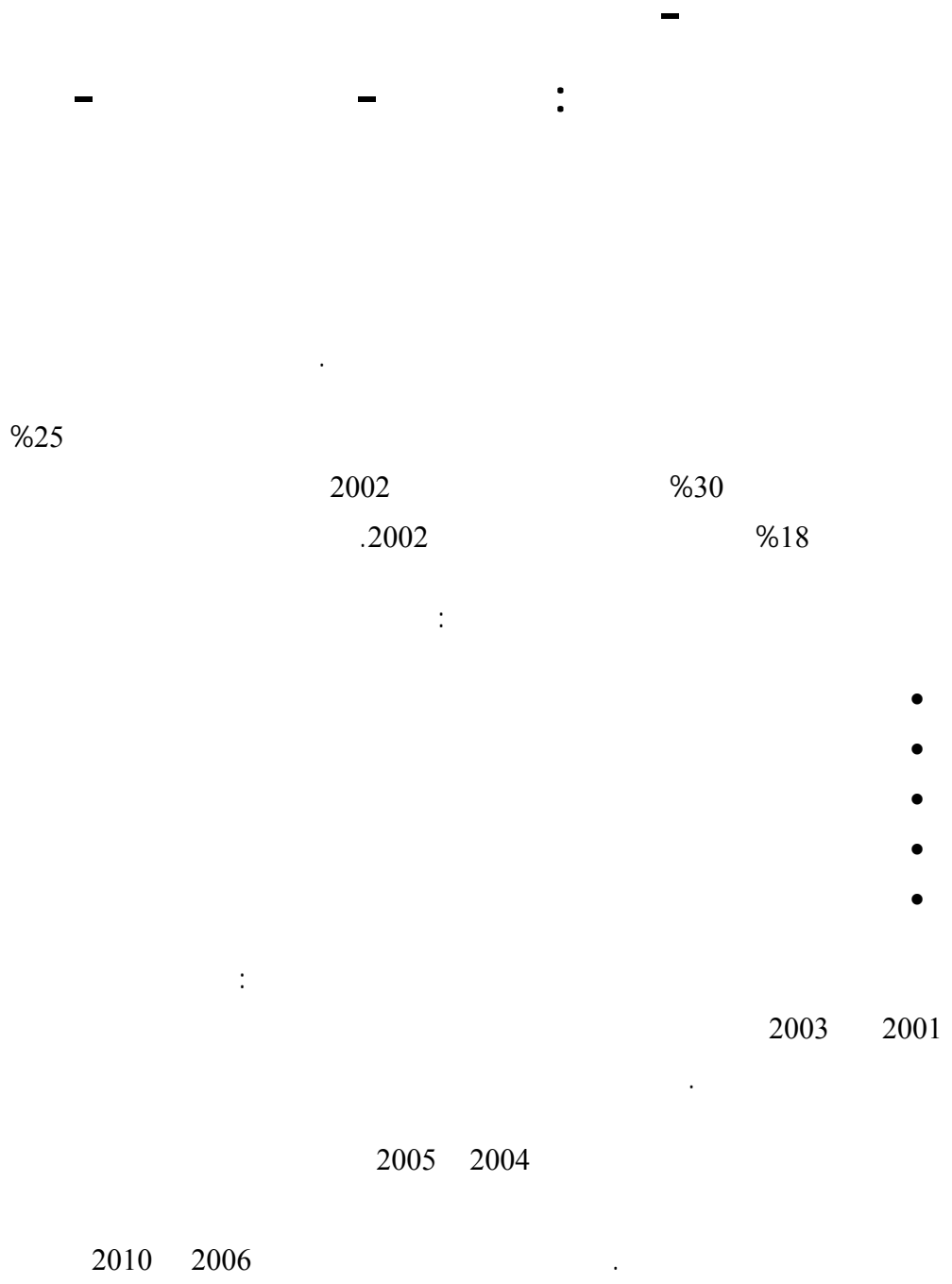
GAFTA

2002                      - GTZ                      -                      :                      -                      -                      -<sup>1</sup>



GAFTA





. 1-1

:

- 1953 •
- 1953 %25 •
- 1957 •
- 1964 •
- <sup>2</sup>1981 •

.( 2002 – ) %10-%7

2-1

1-2-1

1997

.1998 1

%10

---

1981

-<sup>2</sup>



•

:<sup>3</sup>

3-2-1

1997

1981

:

4-2-1

:

---

\_3

:

- 
- 
- 
- 

:4

5-2-1

.2002/9/16

:

6-2-1

%40

.( )

**3-1**

)

(

2003



---

.

:

.

.

:

.

.

:

.





GAFTA

1-2

1-1-2

1953

1991

1992

1994

1999 1998

GAFTA

.1999

%25

2002

2002

14

%60

.2003

%100

2000

---

2-1-2

1975

1994

1999

"

2000

2003

2004 2003

.2-2- 1-2-

3-1-2

1990

2000

%70 2001  
2003

%50

2002

4-1-2

1972

3 2

"

"

"

2003

.2001

"

5-1-2

2000

: " 2005

" "

.2004/1/1 "

1991

( )

( )

:

2001

" %50

o

.2005

%100

o

)

.(

o

"

"

o

"

2-2

1997

.GAFTA

....

-

-

2004

:

.1

-

-

-

-

-

-

.2

-

-

.3

-

-

.4

"

"

.(4-2- 2-3- ) .



1-3

18

%60

100%

40%<sup>5</sup>

30%

طبقت المغرب حالياً تخفيضاً بنسبة 80% وذلك بناء على كتاب السفارة المغربية الموجه للحكومة السورية رقم 258 تاريخ 2004/4/15<sup>5</sup>.



---

•

:

•

•

•

•

•

•

**2-3**

1998/1/1

2000

%20

2005/1/1

%16

.2010/1/1

.1998/1/1

**3-3**

2002/9/16

- - - - - :

%15

2952

2002/9/16

**4-3**

( )

10

45

:

68

2001

7

-

7

-

35

-

(24 23)

**5-3**

.2002

%60

%40

**6-3**



(

10.3

(

)

**7-3**

**8-3**

:

•

•

•

•

•



---



-

- - )

( -

- -

<sup>8</sup>1997/1996

- - - - -

.2001-1998

---

8

1-4

2-4 1-4  
 . 2001-1998 1997/1996

( ) 2001-1997/1996 : 1-4

	2001*	2000*	1999	1998	1996/97	
%	17.8	18.2	18.8	19.3	19.9	
-2.7	17.8	18.2	18.8	19.3	19.9	
5.2	94.7	79.8	63.0	56.8	77.2	
3.7	112.6	98.0	81.8	76.1	97.2	
	16	19	23	25	21	(%) /
	84	81	77	75	79	(%) /

2000

\*

%3.7 ( + )

112 97

%2.7 . %5.2

795 2001 %16 %21  
 .%84

2-4

2001 2000 1999  
 %7.4

. %0.3

. %4

%10.4

( ) 2001-1997/1996

	2001*	2000*	1999	1998	· 1996/97		
-4.0	9.0	8.8	8.8	10.4	10.6		
10.4	50.1	43.8	29.9	22.0	33.8		
	15,2	16,7	22,9	32,2	23,9	(%)	/
	84,8	83,3	77,1	67,8	76,1	(%)	/
-1.3	8.8	9.3	9.9	8.8	9.3		
0.6	44.5	35.9	33.0	34.8	43.4		
	16,6	20,7	23,0	20,3	17,7	(%)	/
	83,4	79,3	77,0	79,7	82,3	(%)	/
7.4	59.2	52.6	38.8	32.4	44.4		
0.3	53.4	45.3	43.0	43.7	52.7		
3.7	112.6	98.0	81.8	76.1	97.2		
	5.803	7.267	-4.130	-11.282	-8.378		
	53	54	47	43	46	(%)	/

2000

\*

%1.3

. %0.6

2-4

%1

3-4

. %3.7

. %3.1

%6.2

%3.7

. %3.7

2001-1997/1996 (GAFTA)

3-4

( )

	2001*	2000*	1999	1998	1996/97		
%	-3.7	4.9	4.6	5.0	4.8	5.7	
	3.7	3.5	3.2	2.4	3.0	3.0	GAFTA
	6.2	0.9	1.0	0.8	0.9	0.7	
	3.1	3.7	3.5	2.4	2.4	3.3	GAFTA
	-1.0	8.4	7.8	7.5	7.8	8.8	
	3.7	4.7	4.6	3.3	3.3	4.0	
	0.6	13.2	12.5	10.9	11.2	12.9	GAFTA
	3.7	3.2	4.2	4.5	4.8		

2000

\*

%0.6

4-4



2001 -1997/1996 (

5-4

( )

	2001*	2000*	1999	1998	1996/97	
%						
3.7	4.7	4.6	3.2	3.3	4.2	GAFTA
-0.01	48.6	40.7	39.6	40.3	48.7	
0.3	53.4	45.3	43.0	43.7	52.7	
	8.8	10.2	7.9	7.6	7.7	(%) / GAFTA
-0.96	8.4	7.8	7.5	7.8	8.8	GAFTA
9.4	51.0	45.0	31.3	24.5	35.5	
7.4	59.2	52.6	38.8	32.4	44.4	
	14.2	14.8	19.4	24.3	19.9	(%) / GAFTA

2000

\*

6-4

%6.2

. %2.1

. %0.4



2001 -1997/1996

6-4

( )

	2001*	2000*	1999	1998	1996/97	
%						
6.2	0.961	1.0	0.8	0.9	0.7	GAFTA
-2.1	7.8	8.3	9.0	7.9	8.5	
-1.3	8.8	9.3	9.9	8.8	9.3	
	10.9	11.3	9.0	10.2	8.1	(%) /GAFTA
	12,2	12,7	9,9	11,3	8,5	(%) / GAFTA
-3.7	4.9	4.6	5.0	4.8	5.7	GAFTA
-4.1	4.1	4.1	3.8	5.6	4.8	
-4,0	9.0	8.8	8.8	10.4	10.6	
	55	53	57	46	55	(%) /GAFTA
	122	113	134	86	120	(%) /GAFTA

2000

\*

(GAFTA)

3-4

4-4

.%11.7 %13.3

%32.8

.%2.33

1.3.4

7-4

%95

2001

1-4

%34

.%41

) 2001 -1997/1996

7-4

(

2001*	2000*	1999	1998	96-97/	
961	1,060	891	904	756	GAFTA
390	426	245	322	256	
186	250	219	232	144	
49	58	29	32	58	
159	196	308	255	237	
101	40	21	5	36	
41	33	32	39	16	
35	56	37	19	9	

2000

\*

%26

1998

. %35

1999

, %17

%31

%5 %8

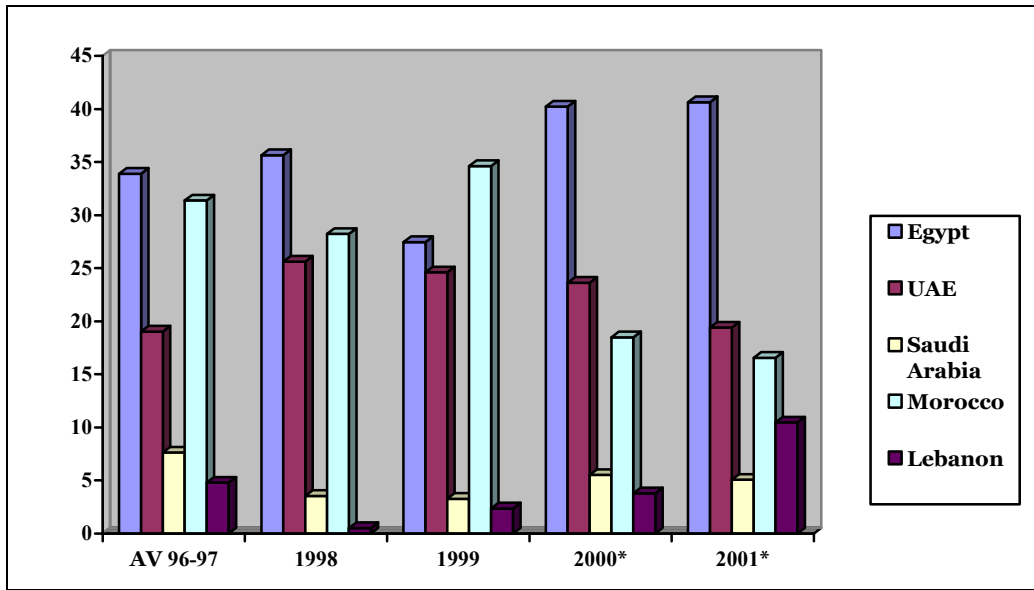
%4 %2

%10

%5

(2001-97/96)

1-4



:97/69

: 2001

%90

2001

.8-4

( ) 2001 -1997/1996 ,

8-4

2001*	2000*	1999	1998	96/97	
4,975	4,688	5,083	4,812	5,789	GAFTA
778	502	344	348	244	
244	196	237	292	846	
327	397	482	501	545	
605	332	608	1,001	1,281	
1,990	2,363	2,444	1,898	1,723	
534	393	487	263	334	
4,477	4,184	4,602	4,303	4,973	
498	504	481	509	816	

2000

\*



---

3-4-A

.1

- 
- 
- 
- 
- 

2001

.2

( )

- 
- 
- 
- 

.3

- 
- 
- 

4-4-A

%61

%85

2001

9-4

31	46	
7	15	
3	14	
20	10	
61	85	%

( - )

2001

10-4

64	66	
14	21	
9	12	
87	98	%

2001

11-4

9	5	
26	10	
6	46	
34	43	
95	85	%

:

.1

■

■

---

.2

- 
- 
- 
- 
- 
- 

.3

- 
- 
- 
- 

.4

- -  
  
- -

- 
- 
- 
- 

6-4-A

2001

12-4

9	2	- - -
13	8	
27	43	- - -
26	28	
75	81	%

%81

%75

1997/1996 / . 19.4

8 - 4 - A

.2001 / . 14.1

	2001	13-4
15	9	
32	51	
31	33	- - -
78	93	%

	2001	14-4
45	27	
7	28	
28	32	
80	87	%

3-3-4

.2001

2001

. 2000

9-4-A

2000

%93 %82

%67

2001

%24

103

45



---

- %3 ( ) - %15.2  
. %1

.2001-1995

10-4-A

.2000 %74 %88  
%67

256 2001 .

.2001 %22 102  
- %1.8 - %4

. %3.6

**4-4**

-A

-

-

12-4

%20

%55

2001

*1-4-4*

:

2001 ■  
 13-4-A ■  
 14-4-A ■  
 %96.7 ■  
 %68 2001 ■  
 %28.7  
 2-4-4

: 15.4

	1250 ,	5089
	274 , vigna mungo	271
24 ton -	160 -	184
	32	273
	28 , vinga mungo	118
	20-	47

21-4-A

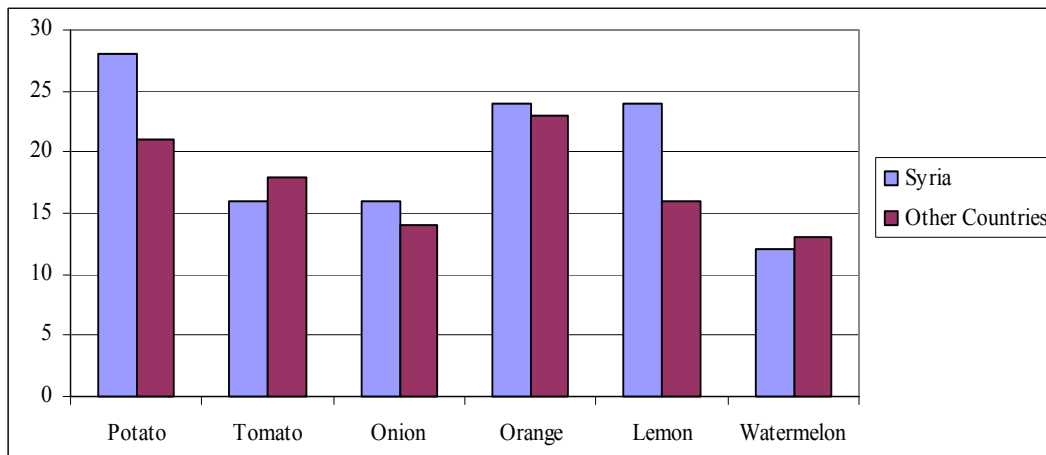
16-4-A

(2003 )  
, ( )

2002

3-4

( )

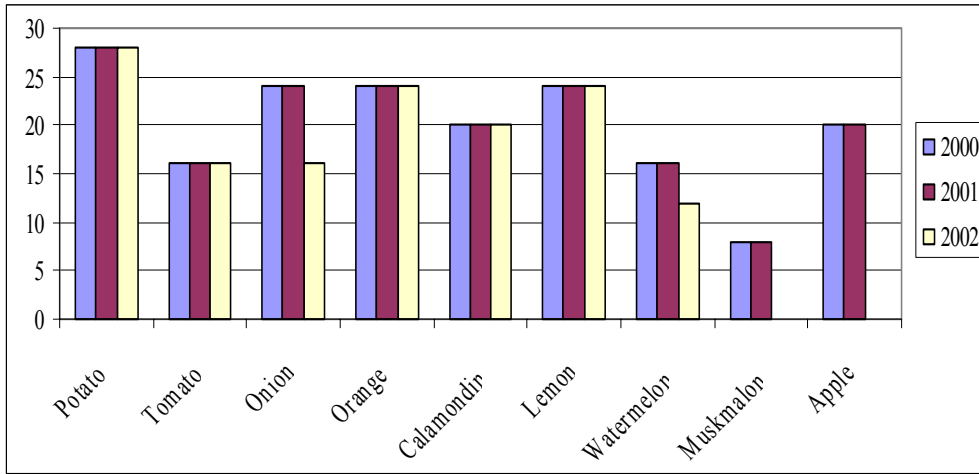


:

1-5-4

. 2002-2000

( ) 2002-2000 4-4



:

14-16

16-24

( )

)

)

(

.(22-4-A

( )

3171

( )

875

170

. ( )

. ( )

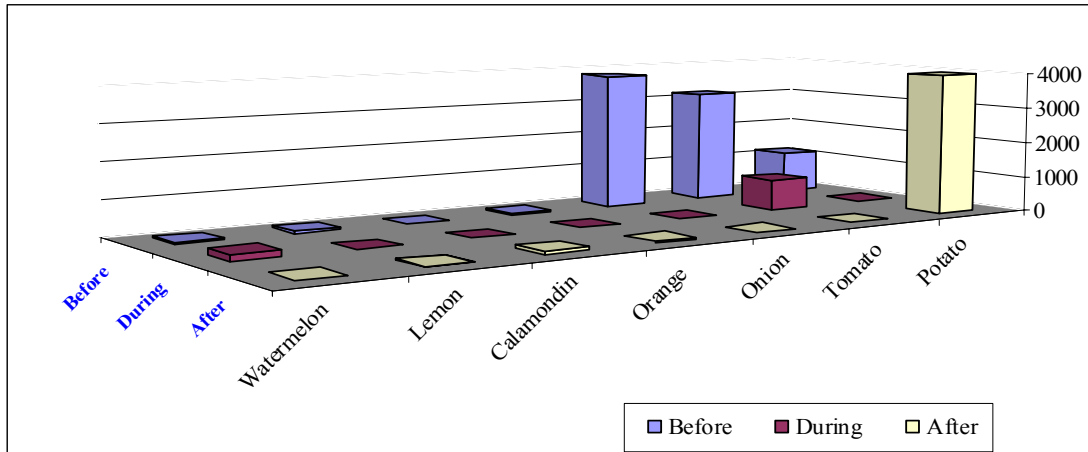
( )

75

( )

2002

5-4



6/30

3/1

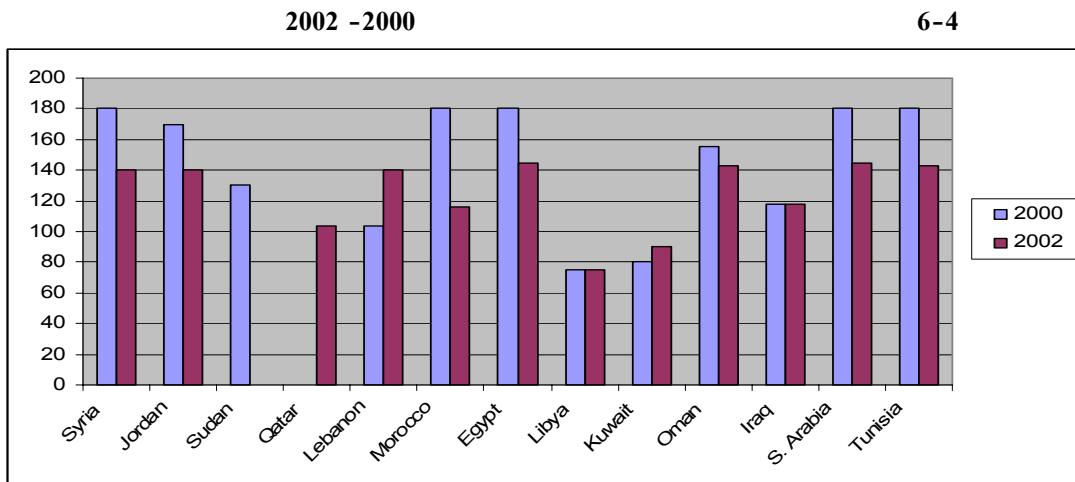
22-4-A

( ) 2002-2000

2-5-4

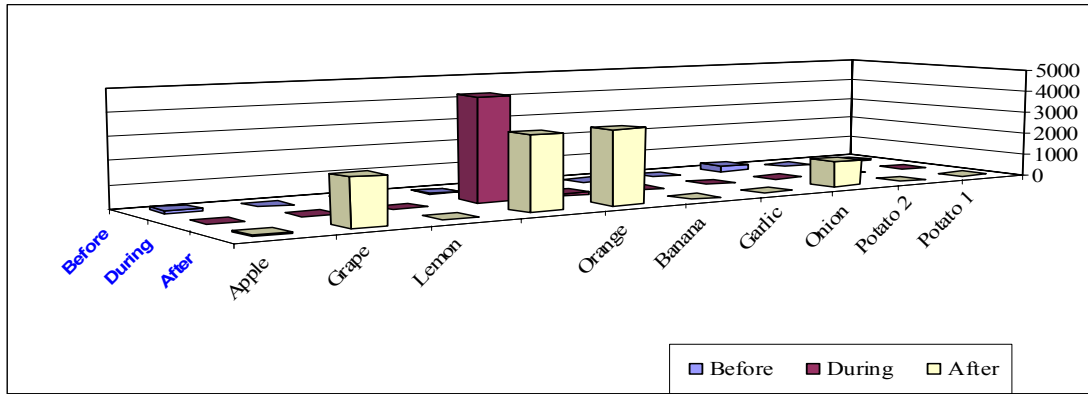
. 2002 -2000

) ( 116 180 )  
 . ( 140 180 )  
 . 140 104 92 80  
 11/30 10/1 2000 :  
 . 4/30 2 /1 2001  
 . 2002



2002

.7-4.



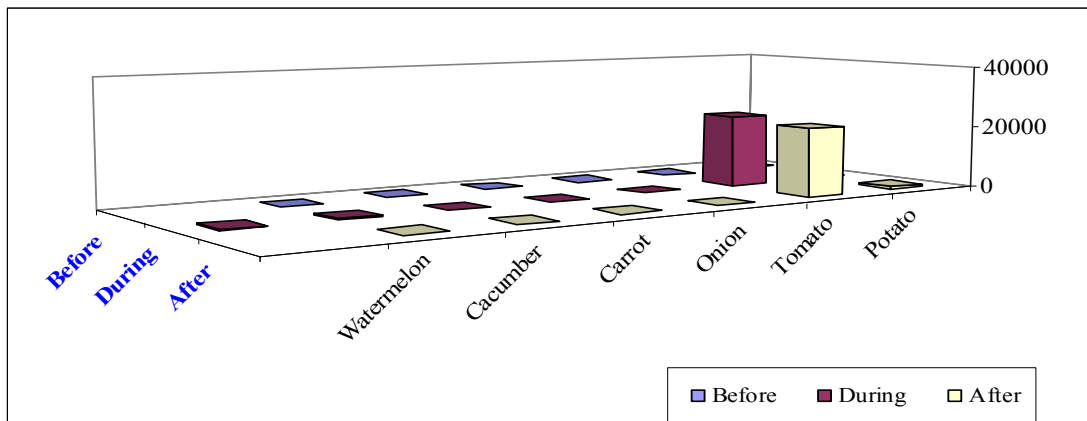
2002

2002

23007

2002

8-4



6-4

1-6-4

(24-4-A )

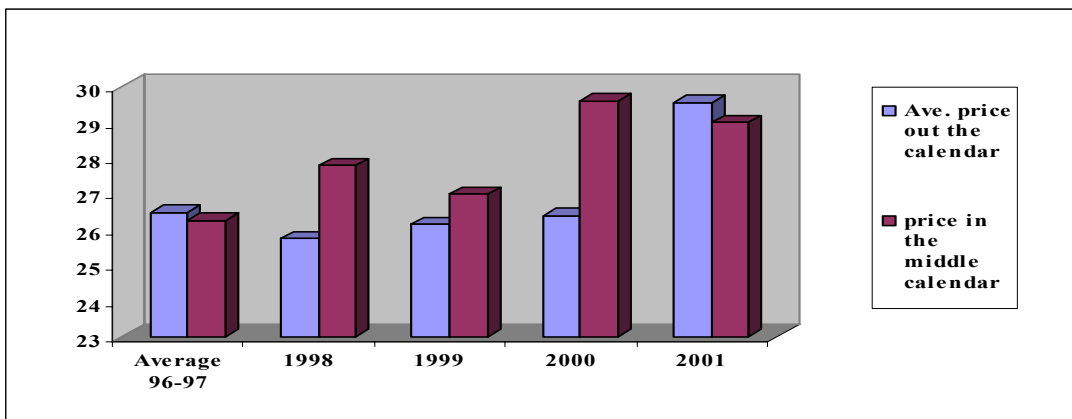
(1997/1996 )

2000-98

2001

( / . )

9-4

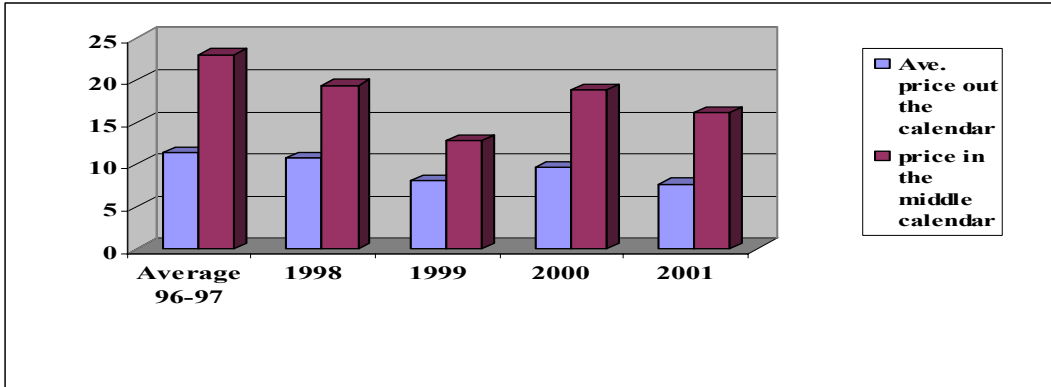


( )



( / . )

10-4

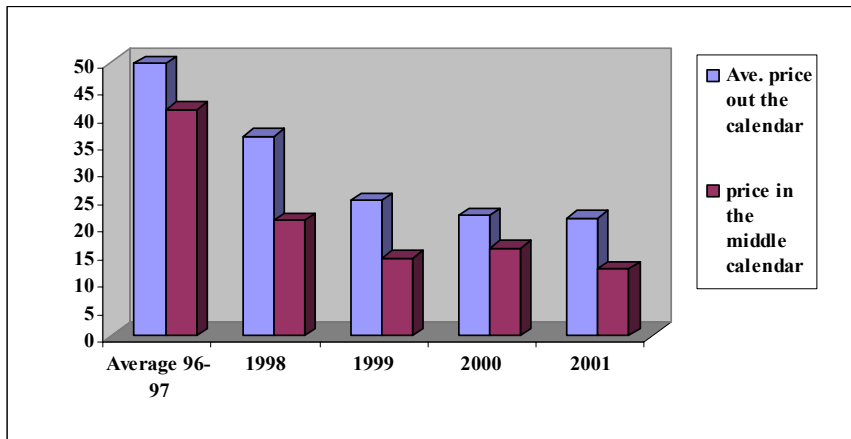


11-4

( / . )

11-4

( / . )



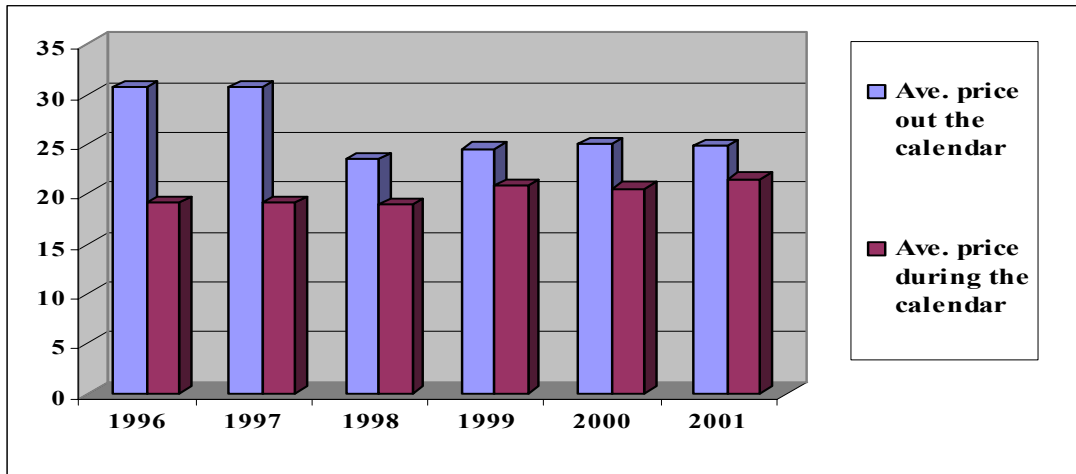
2-6-4

25-4-A

-1

( / .)

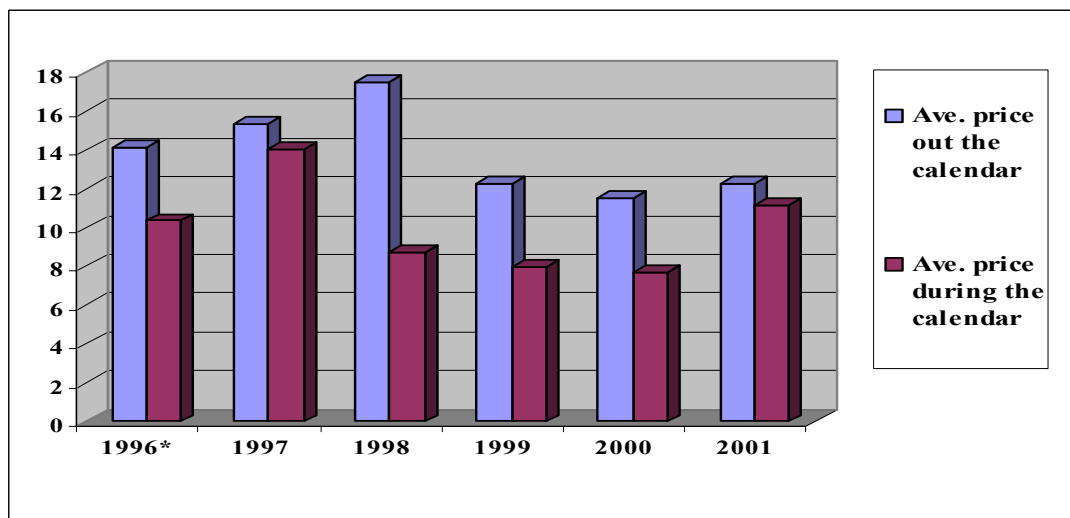
12-4



-2

( / .)

13-4



-

1-5

:

\*

\*

GAFTA

.

GAFTA

:

(GAFTA)

.

( )			GAFTA			1-5
2001-97/69	2001*	97/96	2001-97/69	2001*	97/96	
3.7	112,615	97,218	0.6	13,209	12,911	
				11.7	13.3	/GAFTA
-2.7	17,870	19,953	-2.4	5,936	6,545	
				33.2	32.8	/GAFTA
7.4	59,209	44,420	-1.0	8,487	8,821	
				14.3	19.9	/GAFTA
-4.0	9,024	10,617	-3.7	4,975	5,789	
				55.1	54.5	/GAFTA
0.3	53,406	52,798	3.7	4,722	4,089	
				8.8	7.7	/GAFTA
-1.3	8,846	9,336	6.2	961	756	
				10.9	8.1	/GAFTA

2000

GAFTA

%0.6

. %3.7

%40

%6.2

%3.7

---

.(GAFTA)

6-4 5-4

( )

(GAFTA)

(GAFTA)

%7

%1

%9.4

%4.4

.%4

(6-4 )

9

**2-5**

---

9

( ) GAFTA "

**3-5**







---



(1

)

(2

, (

**(GAFTA)**

(3

(4

( )

(5

**(AOAD)**

(6

(7

**(GAFTA)**

**(GAFTA)**

**(GAFTA)**

(2 )

( )

---

**GAFTA**

( + )

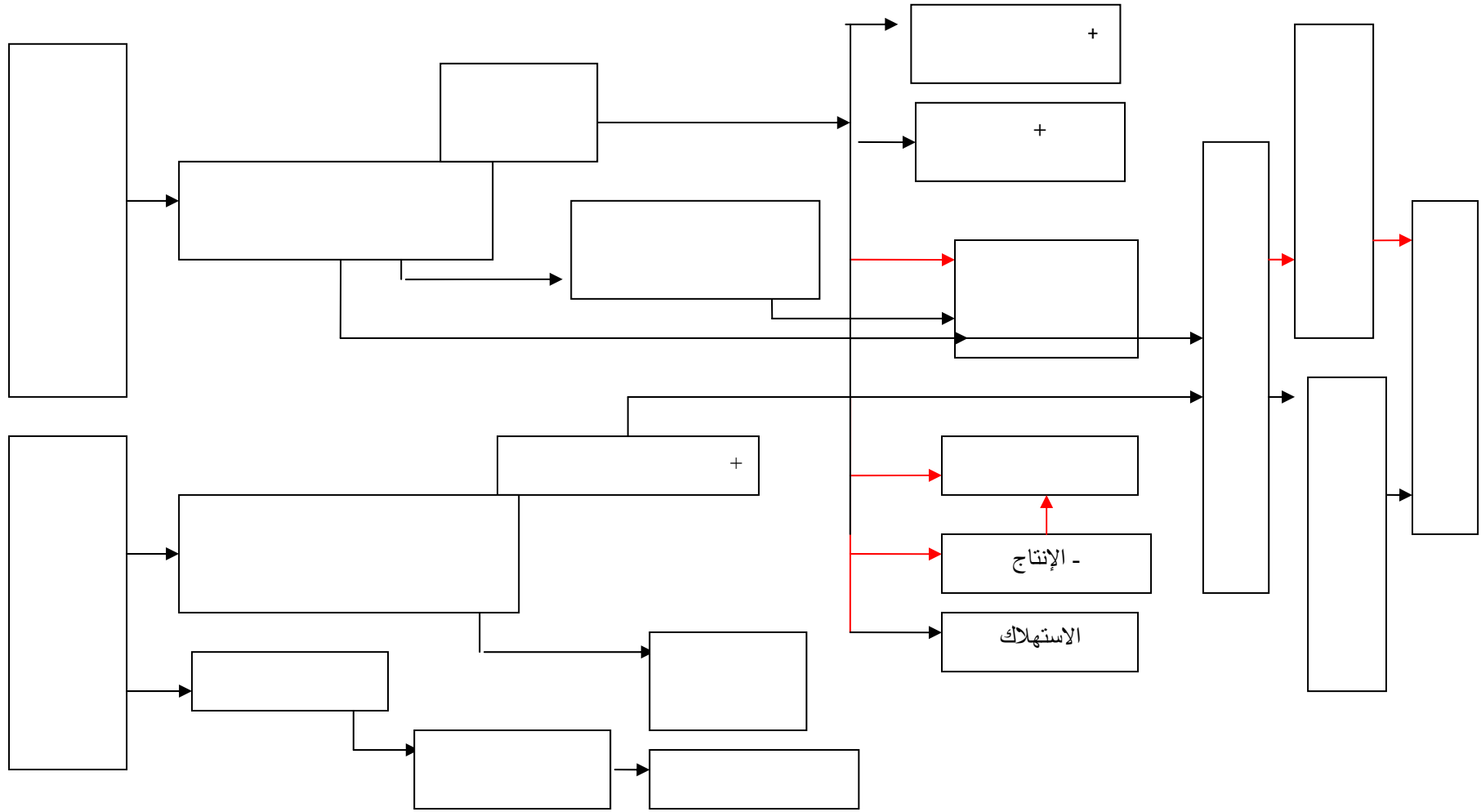
**GAFTA**

## (APM)

.1.

## (GAFTA)

الافتراضات و المخاطر	المصادر المعتمدة	المؤشرات	الاستراتيجية
.-1	.-1	-1	.-1
			.-2
.-2	.-2	-2	
.-3	FAOSTAT	-3	.-3
	.-3	-4	
	.-4		
.-1	.-1	.-1	.-1
EU		( )	.-1.1
	.-2		.-1.2
.-2	.-3	.-2	/
	.-4	.-3	.-2
.-3		/	
GAFTA		.-4	
.-1	.-1	.-1	.-1
		)	.-2
	.-2	(	
.-2			.-3
.-3	.-3	.-2	.-4
	FAOSTAT	/	
.-4			
GAFTA		, ,	.-3
.-5			
.-6			
	.-1	.-1	.-1
		•	
		•	.-2
	) /		
	(		



---

:

-2.

- -		1
	.1.1.1	1.1
	.2.1.1	
	.3.1.1	
	.4.1.1	
-	.5.1.1	
	.1.2.1	2.1
)	.2.2.1	
	.3.2.1	
	.4.2.1	
)	.5.2.1	
		<b>.3.1</b>
- -	.1.1.3.1	.1.3.1
- -	.1.3.2.1	.1.3.2

		-2
		.1.2
		.2.2
		.3.2
		.3
		.1.3
.1.3 ( - )	.	( ) .2.3
( ) :		.3.3
- : - - -	:	.4.3



---

-1.1.

						.
*	*	*	*	1998	9	1
		*	*	1998	14	2
*	*	*	*	1998	10	3
*	*	*	*	1998	6	4
	*	*	*	1998	2	5
*	*	*	*	1998	1	6
*	*	*	*	1998	4	7
	*	*	*	1998	9	8
		*	*	1998	1	9
		*	*	1998	1	10
*	*	*	*	1998	1	11
—	*	*	*	1998	1	12
*	*	*	*	1998	.11	13
*	*	*	*	1998	13	14
(*)	(*)	(*)	(*)	2010-2005		15
1197				%20	2010-2005	16
2002				%20	2010-2005	Yemen 17
						18
-	-	-	-	-		19
-	-	-	-	-		20
-	-	-	-	-		21
-	-	-	-	-		22

-2.1

:

/ /		
18000	1/11-30/4	
8000	1/11-30/4	
6000	1/11-30/4	
6000	1/11-30/4	
10000	1/11-30/4	
4000	1/10-31/12 1/ 4-15/6	
2000	1/5-30/6	
4000	1/1-30/4	
2000	1/3-1/4	
	1/1-28/2	
	1/3-30/4	
	على مدار السنة	( )

## -2.2.

/ /		
8000	1/2-30/4	
16000	1/3-31/5	
8000	15/4-31/7	
2000	15/3-31/7	
8000	1/10-31/12	
10000	1/2-31/5	
3000	1/8-31/1	
3000	1/6-30/9	
2000	15/6-15/7	
	15/8-15/10	
	1/9-31/1	
	1/8-1/9	
	1/9-31/10	
5000	1/9-31/10	
	15/8-31/10	

الجدول أ.3.2- التناقض بين الروزنامة الزراعية العربية و الروزنامة الثانية للعام 2003-2004 (الروزنامة لسورية)

الروزنامة الزراعية العربية	الروزنامة الزراعية الثانية	المنتجات	التسلسل
	1/11-30/4	الباذنجان	1
	1/11-30/4	فليفلة خضراء	2
	1/11-30/4	الفاصولياء	3
	1/11-30/4	كوسا	4
	1/11-30/4	بطيخ أحمر	5
1/5-30/6	1/10-31/12 , 1/4-15/6	بطيخ أصفر	6
	1/5-30/6	العنب	7
1/4-31/5 , 1/9-30/10	1/1-30/4	البصل الجاف	8
	1/3-1/4	الثوم	9
	1/1-28/2	الفريز	10
1/5-30/9 , 1/12/-28/2	1/3-30/4	البطاطا	11
	على مدار السنة	الهليون	12
1/3-30/6		البندورة	13
1/10-31/3		البرتقال	14
1/10-31/3		الليمون	15
1/10-28/2		كلمانتين	16

( ) 2004-2003

-4.2.

	1/2-30/4		1
	1/3- 31/5		2
	15/4-31/7		3
1/11 - 31/3	15/3-31/7		4
1/ 8 - 30 / 9	1/10-31/12		5
1/9 -31/12	½-31/5		6
	1/8-31/1		7
	1/6-30/9		8
	15/6-15/7		9
	15/8-15/10		10
	1/9-31/1		11
	على مدار السنة		12
	1/8-1/9		13
1/11 -31/12, 1/2 - 31/5	1/9-31/10		14
15/6 -15/10	1/9-31/10		15
1/5 - 30/8	15/8-31/10		16
1/8-30-9			17
1/11-31/1			18
1/12-31/3			19

-13.

	20 - 60+201 - % 5-2	
	" 58- 33	( )
105 - 6 75 80 -	80- " 113-85 70-	
	5.5	
	10 . " 1 - 0.5.	
	4-1.5-1	
	105 . 1.5	
	.6	
	0.2	
	0.6	
	4.4	
	30 - 50-30 - 0.3	( )

- : 7 - - - - -	%1	
%1		% 1.5
% 50	10 ( ) % 1.5 "	16
		0.3
		30
		18
		8.75
		8.75
		15 - 18
	119 - 5-	304+310
		105
		100
	88.80 -	88.90
		610+240
- - - -	8.500+12.500 .	



-1.4.

2001*	2000*	1999	1998	97/96	.
167688	106311	55942	81529	52666	
461	476	240	340	305	
71293	43064	59063	34146	38967	
496	563	624	528	445	
1051	3987	4140	5473	1368	
4	21	28	36	6	
240032	153363	119145	121149	93001	
961	1060	891	904	756	
2001*	2000*	1999	1998	97/96	.
70	69	47	67	57	
48	45	27	38	40	
30	28	50	28	42	
52	53	70	58	59	
0	3	3	5	1	
0	2	3	4	1	
100	100	100	100	100	
100	100	100	100	100	

2000

\*

## .2.4.

					( )	
2001*	2000*	1999	1998	97-96	. /	
512516	489237	440230	409132	865484		
4257	4223	4637	4310	5340		
97560	74511	51352	69682	43056		
677	437	441	496	441		
2653	3259	1653	2119	2548		
41	27	4	6	8		
612730	567007	493235	480933	911088		
4975	4688	5083	4812	5789		
					( )	
2001*	2000*	1999	1998	97-96	. /	
84	86	89	85	95		
86	90	91	90	92		
16	13	10	14	5		
14	9	9	10	8		
0	1	0	0	0		
1	1	0	0	0		
100	100	100	100	100		
100	100	100	100	100		

2000

\*

						( )	
	2001*	2000*	1999	1998	97-96	./	
27	110011	92077	50732	74037	42130		
8	294	344	197	287	216		
327	52	60	157	20	0		
303	1	1.3	4	1	0		
18	173	120	205	782	90		
71	21	12	3	10	2		- - -
54	175	292	73	53	31		
-10	1	8	3	3	2		
80	447	20	428	6	43		
3	2	1	3	0	2		- -
	35393	2638	170	20	58		
253	67	25	2	0	0		- -
11	18	9	9	6	12		
24	3	1	1	1	1		- -
24	19750	7759	2617	3711	8377		- - -
-3	42	39	8	13	48		
0	88	43	53	55	89		
-7	1	0	1	1	1		
-11	346	1272	1103	2174	560		
-14	2	11	9	15	4		)
-12	14	6	6	10	24		
-30	2	1	2	2	8		
34	15	38	43	19	5		
-48	0	1	0	0	2		
	150	0	0	0	0		
	1.2	0	0	0	0		
-40	20	0.07	1	83	157		
-46	0.4	0.00	0.03	1	4		- - -
20	557	453	260	375	269		
2	25	29	23	21	23		
31	1143	484	773	170	388		
30	9	9	9	1	3		- -
144	2	185	166	16	0		
82	0	8	7	1	0		

تابع

						( )	
	2001*	2000*	1999	1998	97-96	. /	
197	3722	929	349	19	48		
165	47	23	10	0	1		
	928	318	34	0	0		
	13	9	1	0	0		
29	6855	4019	3056	2463	2492		
-13	129	196	302	248	230		
	1100	510	25	10	0		
	2	4	0	0	0		- -
41	32564	3145	24829	5458	8272		
41	32	2	15	6	8		
-45	715	174	91	1	7836		
-1	31	10	4	0	32		
14	405	288	0	56	244		
19	20	12	0	3	10		
5	24334	33428	29825	25787	19996		- -
10	212	287	260	251	147		
-73	3	1110	0	343	514		
-63	0	6	0	3	3		
27	238981	149375	115005	115676	91633		
6	957	1039	863	868	750		
-6	1051	3987	4140	5473	1368		
-10	4	21	28	36	6		
27	240032	153363	119145	121149	93001		
6	961	1060	891	904	756		

2000

					( )	
2001*	2000*	1999	1998	96-97	./	
46	60	43	61	45		
31	32	22	32	29		
0.0	0.0	0.1	0.0	0.0		
0	0	0	0	0	Value	
0	0	0	1	0		- - -
2	1	0	1	0	Value	
0	0	0	0	0		
0	1	0	0	0	Value	
0	0	0	0	0		- -
0	0	0	0	0	Value	
15	2	0	0	0		- -
7	2	0	0	0	Value	
0	0	0	0	0		
0	0	0	0	0	Value	- -
8	5	2	3	9		- - -
4	4	1	1	6	Value	
0	0	0	0	0		
0	0	0	0	0	Value	
0	1	1	2	1		)
0	1	1	2	1	Value	
0	0	0	0	0		
0	0	0	0	1	Value	
0	0	0	0	0		
0	0	0	0	0	Value	
0	0	0	0	0		
0	0	0	0	0	Value	
0	0	0	0	0		- - -
0	0	0	0	1	Value	
0	0	0	0	0		
3	3	3	2	3	Value	

تابع

					( )	
2001*	2000*	1999	1998	96-97	.	/
0	0	1	0	0		
1	1	1	0	0		
0	0	0	0	0		
0	1	1	0	0		
2	1	0	0	0		
5	2	1	0	0		
0.4	0.2	0.0	0.0	0.0		
1.4	0.9	0.1	0.0	0.0		
3	3	3	2	3		
13	18	34	27	30		
0.5	0.3	0.0	0.0	0.0		
0.2	0.4	0.0	0.0	0.0		
14	2	21	5	9		
3	0	2	1	1		
0.3	0.1	0.1	0.0	8		
3	1	0.4	0.0	4		
0.2	0.2	0.0	0.0	0.3		
2	1	0	0	1		
10	22	25	21	22		
22	27	29	28	20		
0.0	1	0.0	0.3	1		
0.0	1	0.0	0.3	0.4		
100	97	97	95	99		
100	98	97	96	99		
0.4	3	3	5	1		
0.4	2	3	4	1		
100	100	100	100	100		
100	100	100	100	100		

2000

\*

-4.5.

						( )	
AV	2001*	2000*	1999	1998	AV 96-97	. /	
-92.1	20	56	0	48797	515361		
-88.4	0	0	0	116	970		
27.1	1664	1113	515	600	637		
40.2	28	17	8	6	7		
27.5	13996	8007	6140	4911	5296		
54.1	425	139	243	75	75		- - -
29.7	46030	24559	7484	11982	16266		
19.9	650	426	109	181	315		
-17.7	734	532	1794	1292	1596		
-21.7	4	3	10	6	11		- -
4.8	261036	252201	214503	202758	216616		
-3.2	1341	1224	1691	2182	1527		- -
17.3	171054	152300	176537	104534	90330		- - -
-1.6	1305	1094	1661	993	1392		
	1	0	6				
	0		0				
5.6	38	122	0	7	31		
9.3	1	1	0	0	1		)
-4.4	10909	42442	26106	25566	13068		
-19.4	342	1136	623	568	812		
11.5	1596	1014	1338	1719	1034		
-13.0	56	42	126	84	98		
	79	28	26	85			
	2	2	0	0			
-3.0	3120	4540	1184	2914	3521		
1.3	69	71	35	46	65		- - -
91.7	1039	466	350	140	77		
114.4	22	6	11	2	1		
10.0	3246	2358	3910	4436	2214		
5.0	42	53	84	46	35		- - -
-6.1	123	171	347	303	159		
7.5	9	14	9	9	7		

تابع

						( )	
AV	2001*	2000*	1999	1998	97-96	. /	
24.7	2526	1290	1398	1223	1044		
27.2	27	17	18	14	10		
6.3	25990	20940	17310	19280	20389		
2.4	308	236	230	291	280		
1.3	15	33	21	21	14		
-9.3	0	0	0	0	0		
108.5	2603	1128	7	84	138		
72.1	7	4	0	1	1		- -
20.3	27614	22581	15508	35694	13188		
27.6	49	36	22	40	19		
12.4	4534	11478	1375	9071	2840		
13.8	45	34	16	21	27		
-8.21	1127	905	2416	0	1588		
-23.7	14	20	53	0	42		
77.2	30842	14950	13075	2277	3131		
21.9	187	84	125	114	85		-
	140	534	231	1118			
	0	2	3	10			
-9.48	610076	563748	491582	478814	908541		
-3.88	4,934	4660	5079	4806	5780		
1.02	2653	3259	1653	2119	2548		
49.3	41	27	4	6	8		
-9.44	612,730	567,007	493,235	480,933	911,088		
-3.72	4,975	4,688	5,083	4,812	5,789		

2000

\*



-4.6.

					( )	
2001*	2000*	1999	1998	96-97	. /	
0	0	0	10	57		
0	0	0	2	17		
0	0	0	0	0		
1	0	0	0	0		
2	1	1	1	1		
9	3	5	2	1		- - -
8	4	2	2	2		
13	9	2	4	5		
0	0	0	0	0		
0	0	0	0	0		- -
43	44	43	42	24		
27	26	33	45	26		- -
28	27	36	22	10		- -
26	23	33	21	24		-
0	0	0	0	0		
0	0.00	0	0	0		
0	0	0	0	0		
0	0	0	0	0		)
2	7	5	5	1		
7	24	12	12	14		
0	0	0	0	0		
1	1	2	2	2		
0	0	0	0	0		*
0	0	0	0	0.0		
1	1	0	1	0		- - -
1	2	1	1	1		
0	0	0	0	0		
0	0	0	0	0		
1	0	1	1	0		- - -
1	1	2	1	1		r
0	0	0	0	0		
0	0	0	0	0		

تابع

					( )	
2001*	2000*	1999	1998	96-97	. /	
0	0	0	0	0		
1	0	0	0	0		
4	4	4	4	2		
6	5	5	6	5		
0	0	0	0	0		
0	0	0	0	0		
0	0	0	0	0		- -
0	0	0	0	0		
5	4	3	7	1		
1	1	0	1	0		
1	2	0	2	0		
1	1	0	0	0		
0	0	0	0	0		
0	0	1	0	1		
5	3	3	0	0		-
4	2	2	2	1		
0	0	0	0	0		
0	0	0	0	0		
100	99	100	100	100		
99	99	100	100	100		
0	1	0	0	0		
1	1	0	0	0		
100	100	100	100	100		
100	100	100	100	100		

2000

:

\*

/ .

-7.4.

2001*	2000*	1999	1998	97-96	
2.7	3.7	3.9	3.9	5.1	
1.9	9.3	8.8	11.8	7.4	- -
2.1	5.0	3.1	3.5	5.7	- - -
2.7	4.5	4.3	4.2	5.8	
12.7	24.3	28.6	11.1	19.9	
18.8	48.7	98.9	100.8	92.4	
1.0	0.5	0.6	1.0	1.0	
8.7	8.6	8.7	9.7	7.4	-
4.0	6.9	7.5	7.5	8.1	

:

2000

\*

/ .

-8.4.

2001	2000	1999	1998	1996-1997	
14.11	17.36	14.55	15.13	19.34	
5.14	4.85	7.88	10.76	7.05	- -
7.63	7.18	9.41	9.50	15.41	- - -
<b>6.89</b>	<b>6.39</b>	<b>8.68</b>	<b>10.51</b>	<b>10.00</b>	
11.84	11.26	13.29	15.11	13.74	- -
1.78	1.58	1.43	1.11	1.41	
6.07	5.64	9.55	50.09	27.02	-
<b>6.44</b>	<b>6.08</b>	<b>8.21</b>	<b>7.77</b>	<b>10.44</b>	

:

2000

\*

-9.4.

2001		2000		1999		1998		1997		1996		1995		
%	Tons	%	Tons	%	Tons	%	Tons	%	Tons	%	Tons	%	Tons	
31	73574	60	92027	43	50732	61	74037	45	34875	45	49384	60	54660	(10/6/b)
0	0	0	0	0	0	0	0	0	0	13	14000	0	0	(17/1/a/1)
1	1766	0	570	1	1771	1	1364	0	263	10	10504	4	3554	(15/12/b)
2	3708	3	4416	1	790	1	1643	8	5789	9	9406	0	0	(8/1/a/2)
8	19088	20	30125	20	23681	18	21761	18	13815	8	8788	7	6421	
3	7344	1	2212	1	1730	1	1811	1	607	0	0	0	0	-
2	3976	0	0	0	0	0	0	0	0	0	0.1	0	0.2	
3	7158	0	0	0	0	0	0	0	0	0	0	0	0	
11.4	27432	2	2977	21	24485	4	5326	14	10703	5	5713	1	602	(23/4)
0.3	728	0	0	0	314	0	0	0	0	0	150	1	601	(12/1/h)
0.4	1020	3	3920	3	3920	4	5322	2	1718	1	769	4	3554	(15/10/a/1)
2	4588	0	0	0	0	0	0	0	0	0	0	0	1	
0	0	0	0	0	0	0	151	0	215	0	0	0	0	(12/1/c)
3	6855	3	4019	3	3054	2	2463	4	2874	2	2021	3	2732	(16/4/a)
0	0	1	2295	2	2908	2	2263	3	2283	2	2545	3	2953	(15/7/I) -
1	2629	0	0	0	0	0	0	0	0	0	0.1	0	1	
1	2056	0	88	0	344	0	132	0	128	0	0	0	104	-
67		93		95		96		95		95		82		%
100	240032	100	153363	100	119145	100	121149	100	77081	100	108920	100	91403	

-10.4.

2001		2000		1999		1998		1997		1996		1995		
%		%		%		%		%		%		%		
0	0	0	0	0	0	0	2	38	296764	53	556495	58	555085	(10/3)
0	0	0	0	0	0	10	48751	10	77663	10	99740	3	32832	(10/1) ( )
27	162530	30	170635	25	123303	21	101102	14	107486	8	82378	8	72616	(7/1/d)
1	4037	0	2106	1	3538	1	5701	6	44830	5	55958	1	11897	(7/5/d/2)
1	7645	1	8276	3	15346	2	10542	1	8295	3	27467	4	39952	(7/1/g/2)
2	10890	7	42255	5	25988	5	25370	1	6119	2	17694	2	21512	(1/4/a)
5	33160	2	9321	1	6201	2	11485	2	14929	2	16119	2	21631	(55/1)
5	30372	4	21062	8	38626	4	19511	3	20038	1	12654	2	21261	(8/4/a)
4	25670	4	22509	3	12350	7	35190	2	17509	1	8491	0	473	(23/4)
3	17299	3	15200	5	24516	4	17359	1	6167	0	3697	1	5726	(8/6/a)
1	7454	5	28894	4	21125	4	20911	2	17699	1	12691	2	14573	(7/1/u/2) -
4	21958	4	23624	4	19668	1	3698	0	2249	0	5124	1	5946	(8/2/a)
2	11815	1	7458	4	19199	1	3810	1	5630	0	3074	1	4923	(8/6/b)
2	14619	3	17234	4	18102	2	10975	2	16992	1	9829	1	9296	(8/9/c)
3	18092	2	12722	3	16755	2	8831	1	5060	0.5	5345	1	7712	(8/2/b)
2	11154	1	6286	1	2992	1	2653	1	3899	0.3	2669	1	5519	(0909.30.00)
2	11242	2	12137	1.0	4923	2	7857	1	5879	0	3722	0.3	2582	(8/9/b)
2	10256	1	3669	1	4615	1	5600	2	11914	1	10209	0	3861	(0802.50.10)
2	13531	3	16977	3	13948	3	14533	1	9290	2	17481	1	12041	
67.2		74.1		75		74		87		91		88		
33		26		25		26		13		9		12		
100	612730	100	567007	100	493235	100	480933	100	776610	100	1045567	100	962078	

2001

%24 :

/ / 2001

-11.4.

%								
	2001	2000	1999	1998	1997	1996	1995	
0.74	4487249	0	0	0	0	0	0	(0706.10.00)
1.85	11279382	0	0	0	0	0	0	(0709.60.00) "Pimenta" "Capsicum"
1.73	10545810	0	0	0	0	0	0	(2304.00.00)
2.33	14185527	0	0	0	0	0	0	(2306.10.00)
1.32	8044004	0	0	0	0	0	0	("Salsify" ) ( ) (0706.90.00) ( )
3.61	22000000	0	0	0	0	0	0	(1512.29.00) ( )
1.66	10145994	0	0	0	0	0	0	(0705.19.00) ( )
0.91	5548406	0	0	0	0	0	0	(1512.21.90) ( )
0.87	5280442	0	0	0	0	0	0	%85 (5205.11.10) ( 14 ) 714.29
15.00	91516814	0	0	0	0	0	0	
7.27	44380755	0	0	0	0	0	0	
22.28	146787337							2001

:

-12.4.

							/ /
2001	2000	1999	1998	1997	1996	1995	(H.S)
0.0	0.0	53.2	17.5	0.0	0.0	0.0	(0901.11.00)
0.0	42.8	20.2	0.0	0.0	0.0	0.0	(55/5/a/2/b)
0.0	267.3	72.4	166.2	0.0	0.0	0.0	(5202.00.00) ( )
100.0	50.0	25.0	0.0	0.0	0.0	0.0	(1105.10.00) ( )
0.0	15.5	15.4	0.0	0.0	0.0	0.0	( ) ( ) (0904.20.00)
386.0	374.0	434.1	0.0	0.0	0.0	0.0	(1202.20.00)
143.0	2572.8	150.0	0.0	0.0	0.0	0.0	Phaseolus ." "Vinga spp." ) (0713.31.90) ( ) ("spp
22.4	18.7	14.4	0.0	0.0	0.0	0.0	(2008.99.90) ( )
26.4	0.0	103.7	0.0	0.0	0.0	0.0	( ) "Ethyl" (2207.10.00) % 80

-13.4.

							/ /
2001	2000	1999	1998	1997	1996	1995	
0	0	0	0	0	0	0	(0407.00.00)
0	0	0	0	0	0	0	(0802.40.00) ( )
0	0	0	0	0	0	0	(0603.00.00)
0	0	0	0	0	0	0	(0712.90.10)
0	0	0	0	0	0	0	(1508.00.00)
0	0	0	0	0	0	0	(2001.90.40)
0	0	0	0	0	0	0	(2203.00.90) ( ) ( ) ( )
0	0	0	0	0	0	0	(0408.99.00) ( )
0	0	0	0	0	0	0	(0802.50.10)
0	0	0	0	0	0	0	(0909.10.00) ( )
0	0	0	0	0	0	0	(2403.99.10) ( )
0	0	0	0	0	0	0	(2401.10.10) ( )
0	0	0	0	0	0	0	(1212.99.20) ( )

(1 )

-14.4.

							/ /	
2001	2000	1999	1998	1997	1996	1995		
0	10	0	0	0	0	0	(1904.30.00)	
497	0	0	0	0	0	0	(0603.10.00)	
0	15500	15350	0	0	0	0	(0904.20.00)	( ) ( )
24300	0	0	0	0		0		
32270	0	0	0	0	0	0	(0806.10.00)	
0	0	10	0	0	0	0	(1202.10.00)	
0	0	0	24000	0	0	0	(1515.11.00)	
40	0	1	0	0	0	0	(1103.11.10) ( )	
0	0	850	0	0	0	0	(1703.00.00)	("molasses" )
0	460000	40	0	0	0	0	(1103.19.90) ( )	("Pellets" )
0	0	0	19050	0	0	0	(1212.99.40) ( )	
2420222	0	0	0	0	0	0	(1905.30.00)	
25000	972	84	0	0	0	0	(2209.00.00)	



(2 )

-15.4.

								/ /
2001	2000	1999	1998	Avr.95-97	1997	1996	1995	
16632	0	0	0	15458	2050	0	44325	( ) ( ) (2203.00.10)
318895	288172	0	55511	183470	176454	310906	63051	(2403.99.10) ( )
0	5750	6000	9865	20117	19227	10742	30381	( ) (0105.00.00) ( )
0	0	0	0	2	7	0	0	2 ( ) (1806.32.10)
0	0	0	0	33	0	0	100	(0401.10.00) 1%
0	0	238	0	7889	0	0	23667	(2202.10.00)
25200	0	302482	0	8	25	0	0	(2201.10.00)
0	0	3	3002	11954	4025	31837	0	(0409.00.00)
10899213	0	0	0	123	0	75	295	(0703.10.10)
51636	635341	202170	0	26	50	0	28	(1905.90.90) ( )
0	10	80	0	5704	17112	0	0	(1515.90.99) ( )

تابع

								/ /
2001	2000	1999	1998	Avr.95-97	1997	1996	1995	
4588467	0	0	0	423	0	0	1270	(0701.90.00) ( )
66736	36521	0	637	5000	15000	0	0	( ) (1904.90.90)
0	0	0	0	11147	33440	0	0	(1511.10.10) %20
0	91513	32241	0	30	90	0	0	( )
0	0	0	0	18	55	0	0	(1602.50.00)
14400	21547	190	0	25	75	0	0	(1515.50.00)
0	0	0	0	1	0	0	2	(1212.91.00)
0	173855	89803	1020	130	50	106	234	( ) " " (1704.00.00)
0	124241	114778	3528	24	0	1	70	(1905.31.00)
576	0	0	0	20	0	0	60	(2009.50.00) ( )
12047	272	182	0	674	5	0	2016	(2002.90.20) ( ) " "
0	0	0	0	16298	0	20	48873	(2401.10.20)
15993802	1377222	748167	73563	278575	267665	353687	214372	

:

-16.4.

							Egypt
2001	2000	1999	1998	1997	1996	1995	Exports Quantity (tons)
837	0	105	0	0	0	0	(1404.20.00)
0.0	583.7	0.0	83.0	0	0	0	(5202.00.00) ( )
0.0	0.3	0.0	0.7	0	0	0	(0707.00.00)
18.0	0.0	0.0	0.0	0	0	0	(0804.10.10)
20.0	0.0	0.0	0.0	0	0	0	(2007.99.20)
0.0	0.0	1.0	0.0	0	0	0	(0708.90.10) ( )
0.0	0.0	1.0	0.0	0	0	0	(1202.20.00)
52.5	53.8	59.7	48.2	0	0	0	(0805.10.00)
0.0	10000.0	10035.0	320.0	0	0	0	("jojoba" ) (1515.90.90) ( )
168.0	126.0	21.0	0.0	0	0	0	20% (1702.30.90) ( ) "fructose"
5000.0	0.0	0.0	0.0	0	0	0	(1512.21.90) ( )
232.0	0.0	0.0	0.0	0	0	0	( ) ( ) " "
14.0	4.0	40.0	0.0	0	0	0	( ) (2005.90.90)
52.0	121.0	15.0	0.0	0	0	0	(0814.00.00)
0.0	0.0	15.2	13.3	0	0	0	(0714.90.10)
0.0	21.6	2.8	3.1	0	0	0	(0807.11.00) " "

-17.4.

2001	2000	1999	1998	1997	1996	1995	
							/ /
11	19.6	0	0	0	0	0	(0802.12.00)
0.0	0.0	95.0	990.1	0	0	0	("Vigna radiata (L.) wilczek" ( ) ( ) )
3.4	0.0	0.0	197.7	0	0	0	(0406.90.10)
0.0	0.0	0.0	0.0	0	0	0	(0706.10.00)
0.7	49.2	1.0	0.9	0	0	0	(1806.32.10) 2 ( )
8.4	6.6	0.0	0.0	0	0	0	(1404.20.00)
40.5	0.0	76.4	24.3	0	0	0	(0402.99.20)
573.1	0.0	0.0	0.0	0	0	0	From safflower seeds
0.0	37.9	0.4	0.0	0	0	0	( )
171.1	113.6	0.0	0.0	0	0	0	(1520.00.10) ( )
25.4	24.7	49.4	0.0	0	0	0	(1202.20.00)
167.4	9.7	0.0	2.2	0	0	0	(0805.50.00) ( ) ( )
0.0	58.8	77.3	70.5	0	0	0	(0713.90.10) " "
10.0	0.0	0.0	0.0	0	0	0	(0712.20.00)
2.4	0.0	0.0	0.0	0	0	0	(1211.20.90) ( ) "Ginseng"
24.5	265.6	7.2	0.2	0	0	0	(0810.90.90) ( )
0.0	64.2	0.9	6.4	0	0	0	(1806.90.10) ( )
534.0	960.6	0.0	0.0	0	0	0	(1108.11.10) ( )

:

( ) -18.4.

2001	2000	1999	1998	1997	1996	1995	( )
37.5	25.0	15.0	0.0	0	0	0	(2102.10.00)
35.8	0.0	673.9	24.3	0	0	0	(2309.90.10)
4.0	12.0	300.0	313.5	0	0	0	(1207.20.00)
0.0	544.8	97.0	0.0	0	0	0	(55/5/a/1) 24
0.0	192.7	19.0	0.0	0	0	0	(55/5/a/2/a)30 22 -
20.4	1.1	1.5	15.2	0	0	0	(0811.90.10)
5.9	2.3	3.9	0.0	0	0	0	(2007.10.10)
0.0	12.0	38.5	27.0	0	0	0	(15/7/I)
0.0	71.4	51.3	77.8	0	0	0	(2103.00.00)
0.2	4.6	16.0	0.0	0	0	0	(1515.50.00)

المصدر قاعدة البيانات في مركز السياسات الزراعية

2000

\*

( -19.4.

2001	2000	1999	1998	1997	1996	1995	( )
23.4	21.2	31.9	8.0	0	0	0	(0802.11.00)
0.0	3.5	9.1	0.0	0	0	0	(0802.12.00)
0.0	2.1	3.1	3.1	0	0	0	(0804.20.10)
8.2	34.0	34.3	34.0	0	0	0	(0708.90.10) ( )
53.7	51.7	10.1	10.5	0	0	0	( ) ( )
0.9	0.2	6.3	0.3	0	0	0	(0709.90.10)
0.0	44.1	21.1	4.6	0	0	0	(0810.00.00)
3.4	30.3	45.5	7.9	0	0	0	(0708.10.00) ("Pisum Sativum" )
0.0	918.6	29.8	0.0	0	0	0	(0104.10.00)
0.0	2.3	6.2	1.2	0	0	0	(0805.90.10)

2000

\*

-20.4.

2001	2000	1999	1998	1997	1996	1995	( )
1.7	1.9	1.0	469.2	0.0	0.0	0.0	Vigna radiata " ( ) ( ) (0713.31.10) ( ) ("(L.) wilczek
0.0	0.0	17.4	27.8	0.0	0.0	0.0	(0811.00.00)
0.0	2.4	0.5	0.1	0.0	0.0	0.0	( ) (2009.00.00)
0.0	0.0	2.3	0.0	0.0	0.0	0.0	(1702.30.00)
7.4	1.5	0.0	0.0	0.0	0.0	0.0	(0504.00.10)
0.0	0.0	0.3	0.4	0.0	0.0	0.0	
6.6	0.2	2.0	7.7	0.0	0.0	0.0	(0401.10.00) 1%
22.4	1.0	37.9	52.6	0.0	0.0	0.0	(0711.20.10)
0.2	2.7	0.0	0.4	0.0	0.0	0.0	"Perry " "cider " ) (2206.00.00) (
0.0	5.9	0.3	0.1	0.0	0.0	0.0	(0813.20.00) ( )
0.0	3.0	0.0	0.2	0.0	0.0	0.0	( ) ( ) "Spores" (1209.99.10)

:

الجدول أ.21.4- تطور الصادرات للسلع التي كانت صفر قبل تطبيق إتفاقية منطقة التجارة العربية الكبرى في بعض الدول المختارة

2001	2000	1999	1998	1997	1996	1995	( )
78.3	45.4	0.0	63.1	0	0	0	) ( ) (0713.50.10) (
24.9	0.8	2.4	5.3	0	0	0	( ) (1806.32.10) 2
0.0	0.0	2.8	0.3	0	0	0	( ) (2009.00.00)
23.0	40.2	11.4	6.1	0	0	0	("lampante" ) (1509.10.21)
55.6	0.0	2.4	2.9	0	0	0	(0711.20.10)
38.1	0.1	0.0	2.4	0	0	0	(2009.80.19) ( )

:



"

-22.4.

				<b>Tons</b>		
2	0	0	2915	248	0	1
1.9	6.1	69.3	3040	3171.1	71.2	2
43	15	20.6	3836	4363.2	1173.5	3
75	684	33	0	2320	1320	4
2039.5	976.5	29.6	0	856.7	1703	5
170	5420.3	673.5	328.4	86.5	206	6
13	817.8	276.5	0	0	7.3	7
0	77.7	0	0	0	241.6	8
0	222.4	36.1	0	0	102.3	9
0	124	0	0	0	60	10
0	0	0	0	281.5	3960.4	11
0	15.1	2.1	18.1	1302.7	1120.3	12

:



## الجدول أ.23.4- الصادرات السورية للمنتجات المحمية للدول الرئيسية الأعضاء في منطقة التجارة الحرة العربية الكبرى

المنتج	الروزنامة الأردنية	قبل	خلال	بعد
بطاطا 1	1/11:31/12	71.6	0	0
بطاطا 2	1/2:31/5	0	0.6	6
بصل	1/5:31/9	259.6	0	1141.2
ثوم	1/5:30/8	0	0	0
موز	1/11:31/1	0	0	0
برتقال	1/12:31:3	13.5	106.2	3197.4
		13.5	4490	3197.4
ليمون	1/11:31:3	3.8	0	27
عنب	1/8:30/9	0	13.2	1964
تفاح	1/9:31/12	122	20.6	62.8
خوخ	1/8:30/			
المنتج	الروزنامة اللبنانية	قبل	خلال	بعد
بطاطا	1/5:1/10	0	0	0
بندورة	15/2:15/6	0	0	0
بصل	15/8:1/11	0	0	0
خيار	1/4:30/5	0	0	0
برتقال	1/11:30/4	2.4	0	0
مندرين	15/10:31/1	6.2	5.3	0
عنب	1/9:31/12	4.3	0	0
بطيخ أحمر	1/6:31/8	0	57.9	12.8
تفاح	1/10:1/3	0	0	0
المنتج	الروزنامة الزراعية السعودية	قبل	خلال	بعد
بطاطا	1/1:30/5	276.7	0	642.6
بندورة	1/5:31/8	2	23006.6	21658.1
بصل	1/6:31/10	19.8	1.1	124.2
جزر	1/2:31/5	78.4	2	64
خيار	1/5:31/8	40.4	2.8	2
كوسا	1/6:31/7			
البامياء	1/7:31/8			
بطيخ أحمر	1/5:31/8	1.2	421.5	68.3
			315.5	
المنتج	الروزنامة الزراعية المصرية	قبل	خلال	بعد
بطاطا	1/12:31/3	0	0	0
البرتقال	1/11:31/5	0	15.6	0
			0	
مندرين	1/12:31/3	0	0	0
العنب	1/6:30/9	16	0	0
البطيخ الأحمر	1/6:31/8	0	0	0
البطيخ الأصفر	1/5:31/8	0	0	0
التفاح	1/5:30/8	508	0	829.5
الأجاص	15/7:15/9	0	0	0
المشمش	1/4:30/7			

المصدر: GCD

-24.4.

	2001	2000	1999	1998	97-96			
. /	. /	. /	. /	. /	. /			
9.6	9.2	9.6	9.9	26.6	13.0	3		
8.7	8.9	9.9	7.3	7.3	13.0	7		
11.0	12.2	10.5	10.4	1.0	12.5	11		
11.0	8.8	14.3	10.0	17.4	16.4	2		
15.9	16.1	18.8	12.8	19.4	23.0	4		
5.9	6.6	5.0	6.2	4.2	6.5	7		
40.0	22.7	18.8	21.8	27.5	27.5	9		
13.2	13.5	14.1	14.5	11.9	12.0	12		
16.4	15.7	19.2	15.0	12.8	17.1	4		
25.4	27.6	25.7	22.8	24.0	23.4	9		
28.5	29.0	29.6	27.0	27.8	26.3	12		
29.4	31.5	27.1	29.5	27.5	29.6	3		
26.6	28.2	26.7	28.2	41.7	59.8	8		
14.4	12.2	16.0	14.2	21.0	41.3	11		
17.8	15.0	17.2	21.2	31.2	39.6	3		
12.6	17.0	6.8	14.0	14.8	12.5	3		
12.7	18.8	7.6	11.6	11.5	16.3	5		
7.3	9.4	6.1	6.5	6.6	8.5	7		
0.0	0.0	0.0	0.0	0.0	0.0	4		
6.4	6.2	5.9	7.0	7.3	12.4	6		
4.3	4.7	3.8	4.5	6.2	4.1	9		

:

-25.4.

2001	2000	1999	1998	1997	1996	1995	
0	0	0	0	0	0	0	1
0	0	0	0	0	0	0	2
0	0	0	0	0	0	0	3
0	0	0	0	0	0	0	4
0	0	0	0	0	0	0	5
0	0	0	0	0	0	0	6
24.8	25	24.5	23.5	30.7	30.7	0	7
21.2	20	20.8	19.5	21.8	21.8	0	8
20.5	20.2	20.8	18.4	17.8	17.8	0	9
22.8	21.5	20.8	18.8	17.8	17.8	0	10
25	25.3	19.5	19.2	20.8	20.8	0	11
0	26.3	0	0	0	0	0	12

:



---

## المراجع

- 1997/2/19 -1317-O.S.59  
[http://www.arableagueonline.org/arableague/english\\_en.jsp](http://www.arableagueonline.org/arableague/english_en.jsp)
- ,2002 ( )  
<http://www.arableagueonline.org>
- ,( )  
<http://www.amf.org>
- ,2020/5/30 ,( )
- ,1998-
- .5 ,(NAPC)
- ,( )
- 2003-1998
- -2002
- <http://www.agreements.jedco.gov.jo/afta/part7.htm>
- .2000 -
- :
- .2002-
- ( ) . - ,1999/10/11

- (2000 ) - ,
- (2002 ) - ,2002/8/21
- (2001 ) - ,
- ( ) ,
- - - - , ,
- .1998-
- .2002 - -
- ,
- ,
- - -2003/10/22
- (2003 ) ,
- <http://www.rezgar.com>
- <http://www.albyan.co.ae/emirates/issue-304/8nrup/4.HTML>
- <http://www.mafhoum.com/press5/wrjuly8.htm>
- - .2002/9/25
- <http://www.weekly.ahram.org.eg/2002/604/ec2.htm>
- Saadi Dania (in Arabic),..., *New Trade Rules to Transform Arab Economy, Alexander's Gas & Oil Connections,*
- [http:// www.gasandoil.com/goc/news/ntm22664.htm](http://www.gasandoil.com/goc/news/ntm22664.htm)
- - .2003/9/10/
- [www.weekly.ahram.org.eg/2003/654/ec3.htm](http://www.weekly.ahram.org.eg/2003/654/ec3.htm)
- <http://www.arabicNews.com/ansub/daily/day/020703/2002070327.htm>
- :
- 12881 .

---

<http://www.alriydh-np.com/contents/27-09-2003/economy/econews-7750.php>

•

( )

<http://www.alwatan.com/graphics/2001/may/7,5/heads/lt14.htm>

2003 ,

•

1998 ,

<http://www.ain-al-yaqeen.com/issues/19980916/feat6en.htm>

1999 ,

•

[http://www.economy.gov.lb/moeten/texts/updates/full%20text%20-20include/egypt%20\(A\).htm](http://www.economy.gov.lb/moeten/texts/updates/full%20text%20-20include/egypt%20(A).htm)

.1998 ,

•

<http://www.customs.gov.jo/arabic/jordan-tunisia.shtm>

<http://www.customs.gov.jo/ARABIC/jordn-egypt.shtm>

- 2002/1/29-25

,2003 ,

•

2003 ,

•

•

.2000/2/16 ,

•

<http://www.albayan.coae/albayan/2000/02/16/eqt/15.htm>

•

- ,2002 ,

,2002 ,

•

<http://www.leagueofarabstates.org>