

WTO

AFTA

مشروع GCP/SYR/006/ITA - المرحلة الثانية



منظمة الأغذية
والزراعة للأمم المتحدة



التعاون
الإيطالي



وزارة الزراعة
و الإصلاح الزراعي

GCP/SYR/006/ITA

·
" ·

:

"

'
'
'
'
'

.2001 2000

:

:
:
:

1	:	-
3		-
3.....		2.1
3.....		2.1.1
3.....		2-1-2
4..... AFTA		2.2
4.....		2.2.1
5.....		2.2.2
7.....		
35		-
51.....		
55		-
55.....		1.4
55.....		2.4
56.....		3.4
58.....		2.3.4
59.....		4.4
59.....		1.4.4
60.....		2-4-4
61.....		5.4
62.....		
71		-
71.....	:	
71.....	:	5.1.1
72.....	:	2.1.5

73	3.1.5
73 (A F T A)	2.5
73	1.2.5
76AFTA	5.3
76	1.3.5
77	3.5.2
83	
91	-
91 1994 ()	6.1
91	6.1.1
92	2-1-6
102(WTO)	2-6
102	1-2-6
103 (WTO)	2-2-6
108	3-2-6
110	5-2-6
112	3.6
112	-1.3.6
112	-2.3.6
115	-
117	References

∴ -

(GATT)

(ITO)

(AFTA)

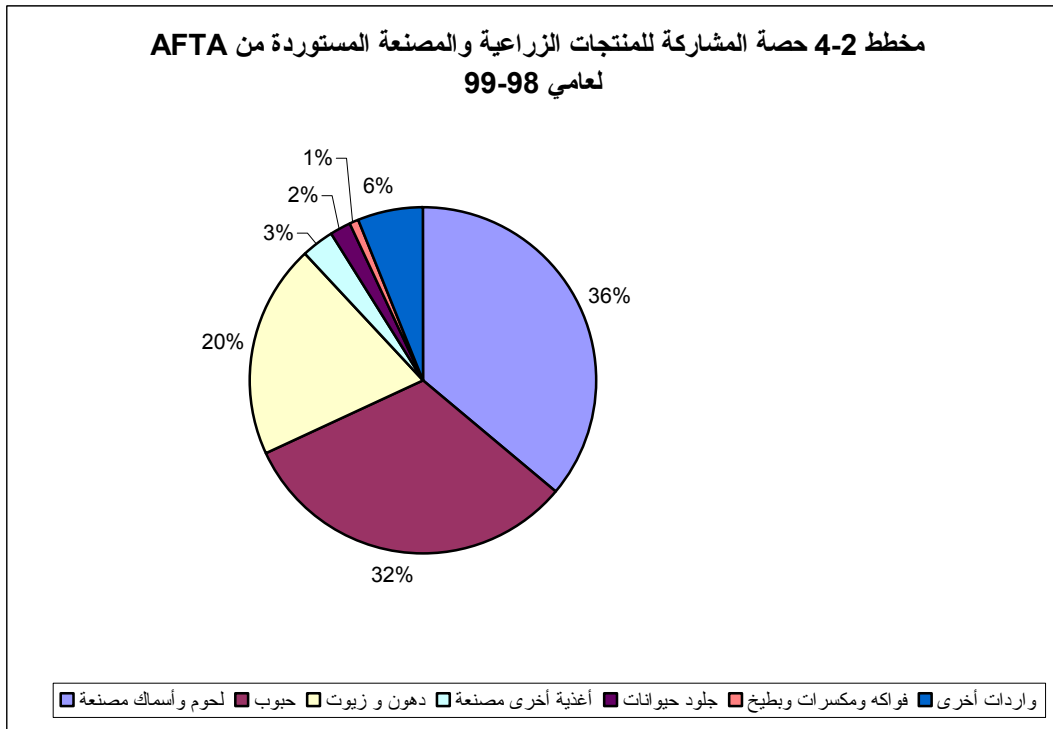
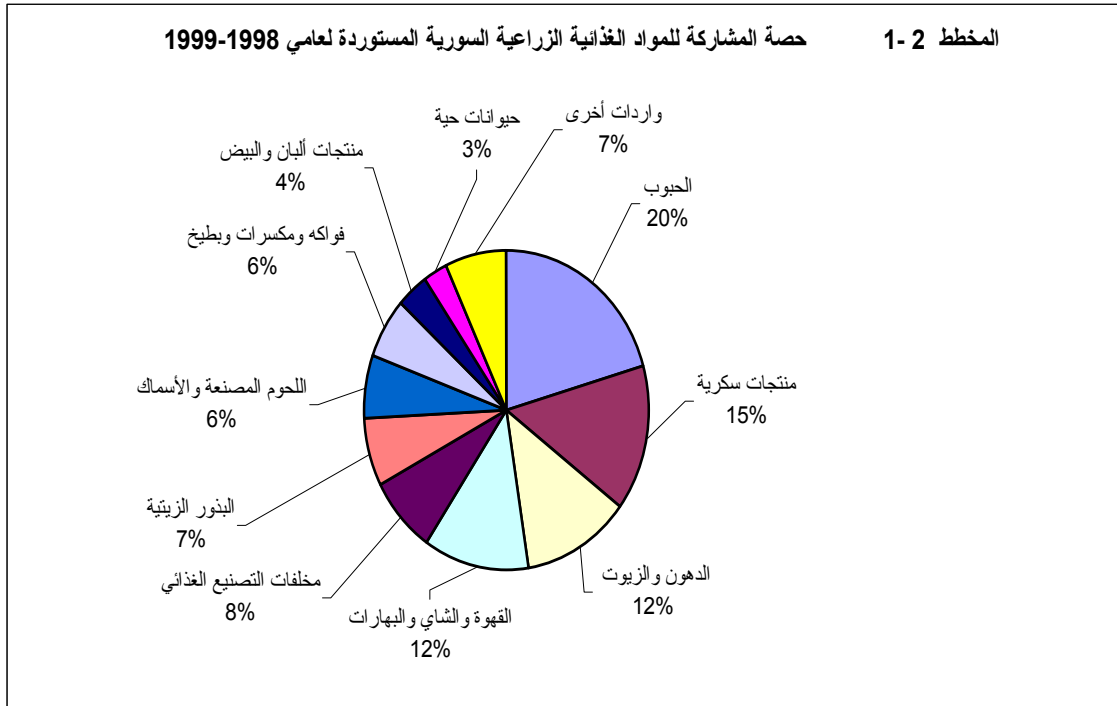
1998

2.1

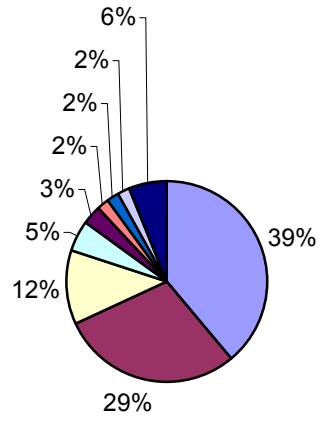
2.1.1

20-18
,1999-1998 % 30 1990-1989 % 11
% 20 1990-1989 %14
-1989 % 6
.1999-1998 % 12 ,1999-1998
,1990
,1987
1,2
2-1-2
1990-1989 % 18
,1999-1998 % 30
,(
)
-1998 % 29 1990-1989 % 18
% 5-3 % 15-6 % 21 ,1999

		1.2
		1999-1998
		2.2
		1999-1998
	1999-1989	3.2
	AFTA	4.2
		1999-1998
	1999- 1998 AFTA	5.2
	1999-1989 AFTA	6.2
		.1.2
		.2.2
		.3.2
		.4.2
		.5.2
		.6.2
		.7.2
		AFTA
	AFTA	.8.2
		9.2
		10.2
		11.2
		12.2

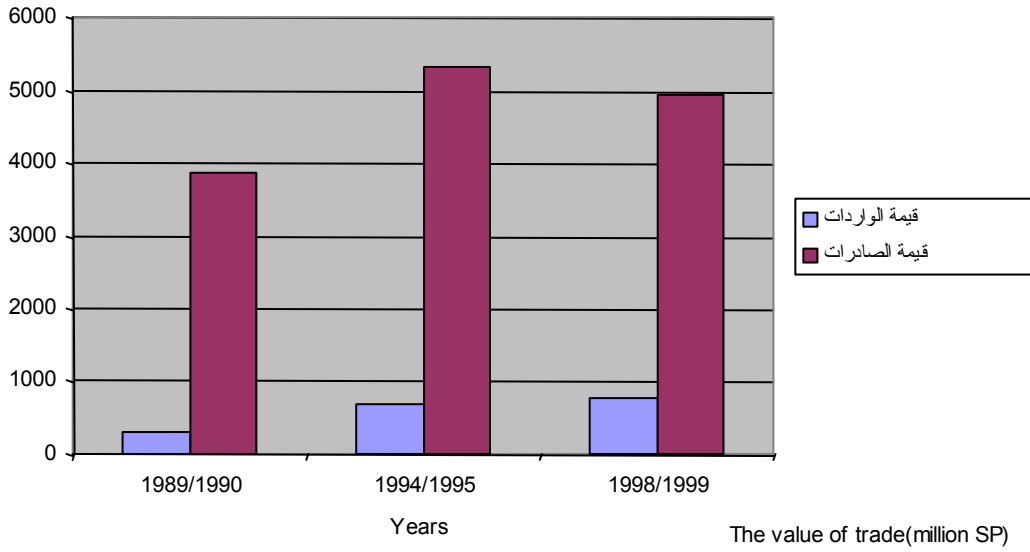


مخطط 5-2 حصة المشاركة للمنتجات الزراعية والمصنعة المصدرة إلى دول AFTA لعامي 98-99



خضار بهارات فواكه وخضار مصنعة حيوانات حية فواكه ومكسرات وبطيخ نباتات زهرية دهون وزيوت قطن خام صادرات أخرى

المخطط 6-2 القيمة الإجمالية للتجارة الزراعية السورية مع دول AFTA لعامي 89-99



1

			1999/1998		1994/1995		1989/1990		
99-98	95-94	90-89							
42.4	-9.6	61.6	595.9	241.0	696.4	844.5	2,138.	508.8	
45.8	-9.9	63.8	580.1	215.8	643.7	785.7	2,121.0	469.4	
-23.0	-5.6	-38.9	15.8	25.2	52.7	58.9	17.3	39.3	
-34.3	-98.1	-53.0	0.2	0.4	0.5	54.	2.7	8.9	
-54.1	-71.1	40.5	0.8	2.8	1.0	6.0	4.1	1.7	
0.4	-59.4	-0.3	302.9	300.7	91.4	359.1	80.9	81.4	
17.6	-85.4	-64.4	249.5	174.8	16.6	210.9	8.8	40.6	
95.9	100.0	98.5	20.8	0.4	46.0	0.0	24.9	0.2	
-58.8	-67.4	7.5	32.6	125.4	28.8	148.1	47.2	40.6	
79.2	82.3	87.8	40.5	4.7	30.0	2.9	23.4	1.5	
91.8	90.5	33.8	105.7	4.5	85.9	4.3	3.9	1.9	
93.6	91.6	94.9	2,640.6	86.8	2,238.2	97.8	1,157.4	30.0	
100.0	100.0	10.0	44.4	0.0	97.8	0.0	87.6	0.0	
100.0	100.0	99.9	320.4	0.0	201.1	0.0	309.1	0.1	
100.0	100.0	100.0	1.3	0.0	1.8	0.0	7.1	0.0	
43.8	100.0	100.0	181.0	70.8	203.5	0.0	367.3	0.0	
100.0	100.0	100.0	970.4	0.0	528.3	0.0	130.6	0.0	
98.0	98.6	100.0	69.3	0.7	266.3	1.9	11.0	0.0	
97.1	81.5	78.2	1,053.8	15.4	939.5	95.9	244.6	29.9	
47.0	-11.4	69.1	1,425.0	514.0	1,277.3	1,606.9	415.9	76.0	
58.3	-22.9	44.1	1,119.3	294.7	671.6	1,071.5	86.5	33.6	
99.9	100.0	99.6	34.2	0.0	58.6	0.0	144.2	0.3	
-22.9	-12.2	32.3	137.4	219.0	418.4	535.2	82.2	42.1	
99.4	99.8	100.0	117.4	0.3	125.1	0.1	102.3	0.0	
100.0	100.0	100.0	16.7	0.0	3.6	0.0	0.6	0.0	
-47.3	-46.6	-80.0	359.3	1,003.7	347.8	955.1	44.6	401.5	
86.5	50.0	38.5	343.9	24.8	291.4	97.2	43.2	19.2	
-100.0	-99.9	-100.0	0.1	795.9	0.5	696.8	0.0	298.9	
-84.5	-48.4	-96.5	15.3	182.9	55.9	161.0	1.5	83.4	
-44.2	-28.2	-83.7	667.9	1,725.3	632.4	1,128.0	179.6	2,019.9	
100.0	100.0	-90.9	667.3	0.0	131.1	0.0	52.0	1,090.7	
-100.0	100.0	9.5	0.0	336.5	498.3	0.0	127.3	105.3	
-100.0	-99.9	-99.9	0.1	836.6	0.2	561.2	0.2	446.4	
-100	-100	-100	0	551	0	565	0	378	

-27	31	27	0	1	3	1	0	0	
-97.0	-98.8	-100.0	0.4	24.8	2.3	385.0	0.1	1,007.4	
-98.9	-100.0	-100.0	0.1	10.5	0.0	358.0	0.0	976.1	
-95.5	-84.1	-99.6	0.3	14.3	2.3	27.0	0.1	31.2	
-59.2	-17.1	-2.5	148.7	579.7	169.2	239.0	94.7	99.5	
100.0	98.4	99.7	14.4	0.0	22.1	0.2	69.0	0.1	
-63.1	-20.9	-38.2	81.5	360.2	96.7	147.6	10.3	23.1	
-61.2	-28.8	-66.5	52.8	219.5	50.5	91.2	15.4	76.3	
-86.8	-94.6	-99.2	0.6	8.5	0.4	12.7	0.0	3.3	
-63.4	-77.2	-77.1	0.4	1.7	0.2	1.6	0.2	1.7	
-74.7	-85.4	-99.9	145.7	1,004.1	83.1	1,053.5	0.2	575.6	
98.9	97.4	-100.0	55.8	0.3	81.6	1.1	0.0	0.9	
-83.5	-99.7	-99.9	90.0	1,003.7	1.4	1,052.4	0.2	574.6	
-99.8	-99.6	-97.9	0.5	540.4	0.9	429.3	0.2	21.3	
29.2	-95.0	-97.8	0.3	0.1	0.9	36.6	0.2	20.7	
-100.0	-100.0	-100.0	0.0	280.1	0.0	392.6	0.0	0.6	
-99.8	-100.0	-100.0	0.2	260.2	0.0	0.1	0.0	0.1	
-91.3	-84.7	-92.0	56.6	1,245.4	120.0	1,449.2	58.1	1,385.8	
-22.2	26.5	74.9	25.6	40.3	110.9	64.4	160.5	23.1	
-29.2	-8.5	95.1	25.5	46.4	26.9	31.9	305.1	7.7	
82.2	76.6	93.0	321.2	31.4	196.7	26.0	334.8	12.1	
-91.6	-96.2	-69.5	6.9	157.3	3.1	159.9	7.8	43.3	
-28.3	-75.7	-68.0	9.2	16.5	5.4	39.2	8.9	46.8	
-90.2	-99.7	-93.9	33.8	654.7	0.8	563.2	11.5	365.5	
-37.0	-71.4	17.3	48.9	106.3	73.4	439.5	79.7	56.2	
-97.0	60.5	44.1	0.4	27.2	204.0	50.1	91.7	35.6	
16.0	-7.8	42.7	27.0	19.6	40.3	47.1	21.3	8.6	
-100.0	-100.0	-100.0	0.0	0.2	0.0	0.9	0.0	0.4	
100.0	100.0	100.0	2,404.9	0.1	1,285.9	0.2	1,361.3	0.0	
5.7	-13.1	-1.8	9,395.1	8,388.5	7,724.7	10,052.0	6,587.1	6,825.3	

(.) AFTA

-2-

			1999/1998		1994/1995		1989/1990		
99-98	95-94	90-89							
99.4	97.9	100.0	578.1	1.8	574.2	6.0	2,086.8	0.1	
100.0	99.8	100.0	259.5	0.0	522.3	0.5	2,064.2	0.0	
98.9	80.8	99.0	318.6	1.8	51.9	5.5	22.6	0.1	
100.0	-80.8	87.7	0.2	0.0	0.3	2.5	2.6	0.2	
-100.0	-64.2	-23.1	0.0	1.1	0.3	1.5	0.2	0.3	
95.8	96.7	99.2	33.7	0.7	75.4	1.3	88.5	0.4	
100.0	90.3	95.7	4.6	0.0	12.3	0.6	5.8	0.1	
100.0	100.0	100.0	2.6	0.0	42.3	0.0	29.2	0.0	
94.7	93.9	99.1	26.5	0.7	20.8	0.7	53.5	0.2	
38.7	53.4	100.0	9.4	4.1	2.7	0.8	0.2	0.0	
99.3	99.8	99.7	104.7	0.4	85.4	0.1	3.4	0.0	
99.9	100.0	100.0	1,921.9	0.9	1,959.6	0.1	948.5	0.1	
100.0	100.0	100.0	17.7	0.0	90.7	0.0	87.2	0.0	
100.0	100.0	99.8	8.1	0.0	71.6	0.0	116.1	0.1	
100.0	100.0	100.0	0.0	0.0	0.8	0.0	7.1	0.0	
100.0	100.0	100.0	18.0	0.0	194.0	0.0	354.1	0.0	
100.0	100.0	100.0	16.7	0.0	524.8	0.0	131.0	0.0	
100.0	100.0	100.0	53.7	0.0	258.6	0.0	1.8	0.0	
99.9	100.0	100.0	1,807.6	0.9	819.1	0.1	251.2	0.0	
98.5	94.1	84.4	1,414.8	10.5	1,277.1	38.9	280.7	23.8	, ,
98.3	89.4	52.3	1,129.0	9.7	676.7	38.0	75.8	23.8	
99.8	100.0	100.0	19.2	0.0	51.3	0.0	20.7	0.0	
98.8	99.6	100.0	137.1	0.8	423.4	0.9	81.7	0.0	
100.0	100.0	100.0	2.6	0.0	122.1	0.0	102.0	0.0	
100.0	100.0	100.0	126.9	0.0	3.6	0.0	0.5	0.0	
92.0	88.7	93.2	153.0	6.3	148.5	8.9	20.2	0.7	, ,
99.8	82.5	99.9	57.2	0.1	92.8	8.9	19.0	0.0	
-100.0	78.7	-99.2	0.0	0.0	0.5	0.1	0.0	0.6	
87.7	100.0	89.1	95.8	6.3	55.2	0.0	1.2	0.1	
-61.4	31.1	-32.3	57.8	241.8	562.2	295.5	90.6	177.0	
#DIV/0!	100.0	-97.9	0.0	0.0	83.7	0.0	0.9	83.8	
#DIV/0!	100.0	97.7	0.0	0.0	475.5	0.0	89.7	1.1	
#DIV/0!	100.0	-100.0	0.0	0.0	0.2	0.0	0.0	7.9	
-43	33	100	58	143	3	1	0	0	
-100	-100	-100	0	98	0	294	0	84	

43.8	-69.8	-99.6	0.4	0.1	0.7	4.1	0.1	33.7	
#DIV/0!	-100.0	-100.0	0.0	0.0	0.0	0.0	0.0	33.7	
43.8	-69.8	100.0	0.4	0.1	0.7	4.1	0.1	0.0	
85.4	82.1	96.1	64.3	5.1	69.8	6.9	34.0	0.7	
100.0	100.0	100.0	6.9	0.0	16.4	0.0	14.6	0.0	
35.4	34.3	86.6	10.1	4.8	6.6	3.2	6.7	0.5	
98.9	85.5	97.1	47.3	0.3	46.9	3.7	12.7	0.2	
-47.3	-36.5	-95.9	0.0	0.1	0.2	0.5	0.0	0.1	
-33.3	-16.4	36.2	0.2	0.4	0.2	0.3	0.1	0.1	
-11.8	-36.3	-99.9	119.4	151.3	46.8	100.2	0.0	13.2	
100.0	98.8	#DIV/0!	1.4	0.0	45.9	0.3	0.0	0.0	
-12.3	-98.1	-99.9	118.1	151.3	0.9	100.0	0.0	13.2	
-99.7	-99.0	100.0	0.4	275.2	0.8	163.2	0.1	0.0	
84.6	100.0	100.0	0.4	0.0	0.8	0.0	0.1	0.0	
-100.0	-100.0	#DIV/0!	0.0	151.1	0.0	163.2	0.0	0.0	
-100.0	#DIV/0!	#DIV/0!	0.0	124.1	0.0	0.0	0.0	0.0	
79.7	40.6	34.5	17.0	1.9	17.8	7.5	10.1	4.9	
48.4	100.0	100.0	7.0	2.4	9.1	0.0	12.7	0.0	
51.9	59.0	98.6	16.1	5.1	5.8	1.5	32.9	0.2	
99.7	99.1	99.1	251.8	0.4	174.8	0.8	90.5	0.4	
-53.8	-66.2	100.0	6.6	22.1	2.2	11.0	0.0	0.0	
69.2	-24.8	99.8	8.4	1.5	1.8	3.1	3.5	0.0	
49.9	-80.3	-37.4	31.0	10.4	0.0	0.4	8.1	17.9	
65.7	84.2	99.6	23.3	4.8	50.8	4.4	14.6	0.0	
-100.0	-73.0	-97.9	0.0	11.9	3.8	24.3	0.1	13.4	
66.2	15.1	100.0	6.5	1.3	10.2	7.5	0.2	0.0	
-65.4	-100.0	-100.0	0.1	0.6	0.0	0.6	0.0	0.1	
100.0	100.0	100.0	123.6	0.0	228.5	0.0	132.2	0.0	
73.3	76.9	86.2	4,949.5	762.3	5,309.1	691.9	3,861.0	287.2	

(.)

3:

			1999/1998		1994/1995		1989/1990		
-98 99	-94 95	-89 90							
100.0	100.0	100.0	1.6	0.0	45.2	0.0	21.0	0.0	
100.0	100.0		0.8	0.0	1.9	0.0	0.0	0.0	
100.0	100.0	100.0	0.8	0.0	43.3	0.0	21.0	0.0	
100.0	100.0	95.5	0.1	0.0	0.1	0.0	2.4	0.1	
	100.0		0.0	0.0	0.3	0.0	0.0	0.0	
99.9	100.0	99.9	13.9	0.0	41.0	0.0	60.8	0.0	
100.0	100.0	98.0	0.0	0.0	0.2	0.0	2.5	0.0	
	100.0	100.0	0.0	0.0	35.9	0.0	16.3	0.0	
99.9	99.9	100.0	13.9	0.0	4.9	0.0	42.0	0.0	
100.0	41.5		6.9	0.0	1.3	0.6	0.0	0.0	
99.7	100.0	100.0	79.2	0.1	79.5	0.0	0.1	0.0	
100.0	100.0	100.0	459.8	0.1	1,216.6	0.1	636.8	0.0	
100.0	100.0	100.0	15.8	0.0	60.0	0.0	67.9	0.0	
100.0	100.0	100.0	3.1	0.0	12.9	0.0	2.0	0.0	
	100.0	100.0	0.0	0.0	0.6	0.0	7.0	0.0	
100.0	99.9	100.0	12.5	0.0	63.9	0.0	260.6	0.0	
100.0	100.0	100.0	10.1	0.0	172.9	0.0	97.6	0.0	
100.0	100.0	100.0	27.6	0.0	257.1	0.0	1.8	0.0	
100.0	100.0	100.0	390.7	0.1	649.1	0.1	199.9	0.0	
97.0	96.3	100.0	123.3	1.9	540.2	10.3	179.2	0.0	
51.8	78.1	100.0	5.7	1.8	83.7	10.3	15.8	0.0	
100.0	100.0	100.0	1.8	0.0	28.0	0.0	10.0	0.0	
99.9	100.0	100.0	114.7	0.1	402.9	0.0	77.3	0.0	
	100.0	100.0	0.0	0.0	24.9	0.0	76.1	0.0	
100.0	100.0	100.0	1.2	0.0	0.6	0.0	0.1	0.0	
99.7	76.8	75.6	17.1	0.0	68.0	8.9	3.5	0.5	
100.0	26.0	100.0	10.1	0.0	15.1	8.9	3.2	0.0	
- 100.0	84.5	- 100.0	0.0	0.0	0.5	0.0	0.0	0.5	
99.3	100.0	100.0	7.0	0.0	52.4	0.0	0.2	0.0	
100.0	99.8	-40.6	0.0	0.0	30.5	0.0	3.8	8.9	
	100.0	100.0	0.0	0.0	5.7	0.0	0.2	0.0	
	100.0	53.5	0.0	0.0	22.1	0.0	3.5	1.1	
	100.0	- 100.0	0.0	0.0	0.0	0.0	0.0	7.9	
100	100	100	0	0	3	0	0	0	

	-100		0	0	0	0	0	0	
100.0	100.0		0.2	0.0	0.1	0.0	0.0	0.0	
			0.0	0.0	0.0	0.0	0.0	0.0	
100.0	100.0		0.2	0.0	0.1	0.0	0.0	0.0	
99.8	90.5	72.5	1.3	0.0	37.6	1.9	1.2	0.2	
100.0	100.0	100.0	0.1	0.0	2.4	0.0	0.0	0.0	
99.3	100.0	100.0	0.3	0.0	5.8	0.0	0.5	0.0	
99.9	88.0	53.5	0.9	0.0	29.4	1.9	0.6	0.2	
			0.0	0.0	0.0	0.0	0.0	0.0	
100.0			0.1	0.0	0.0	0.0	0.0	0.0	
83.1	34.5		5.9	0.5	39.0	19.0	0.0	0.0	
100.0	100.0		1.1	0.0	38.6	0.0	0.0	0.0	
79.6	-96.7		4.8	0.5	0.3	19.0	0.0	0.0	
-64.6	100.0	100.0	0.3	1.6	0.6	0.0	0.1	0.0	
84.6	100.0	100.0	0.3	0.0	0.6	0.0	0.1	0.0	
-100.0			0.0	1.6	0.0	0.0	0.0	0.0	
			0.0	0.0	0.0	0.0	0.0	0.0	
39.5	7.0	100.0	2.5	1.1	1.3	1.1	5.6	0.0	
83.4	100.0	100.0	2.1	0.2	0.9	0.0	6.1	0.0	
52.4	100.0	100.0	10.2	3.2	2.6	0.0	14.1	0.0	
98.8	99.1	100.0	32.8	0.2	60.5	0.3	32.4	0.0	
31.4	-13.9		1.9	1.0	0.2	0.3	0.0	0.0	
-76.2	-80.3	100.0	0.2	1.2	0.3	3.1	2.5	0.0	
79.2	-86.5	-38.7	15.9	1.9	0.0	0.3	7.8	17.7	
	62.4	100.0	0.0	0.0	1.1	0.3	0.0	0.0	
	-100.0	-100.0	0.0	0.0	0.0	7.5	0.0	9.2	
100.0			5.1	0.0	0.0	0.0	0.0	0.0	
			0.0	0.0	0.0	0.0	0.0	0.0	
100.0	100.0	100.0	5.8	0.0	10.1	0.0	12.2	0.0	
96.8	95.2	92.9	786.2	12.9	2,177.1	53.6	989.6	36.7	

(.)

4:

			1999/1998		1994/1995		1989/1990		
-98 99	-94 95	-89 90							
-61.8	-93.1	11.7	0.4	1.7	0.2	4.5	0.1	0.1	
100.0	100.0	100.0	0.2	0.0	0.0	0.0	0.1	0.0	
-77.8	-94.4	-97.3	0.2	1.7	0.1	4.5	0.0	0.1	
100.0	- 100.0		0.1	0.0	0.0	0.0	0.0	0.0	
			0.0	0.0	0.0	0.0	0.0	0.0	
100.0	90.3	96.7	5.9	0.0	12.3	0.6	3.1	0.1	
100.0	89.9	96.7	4.3	0.0	11.7	0.6	3.1	0.1	
	100.0		0.0	0.0	0.5	0.0	0.0	0.0	
100.0	100.0		1.6	0.0	0.1	0.0	0.0	0.0	
			0.0	0.0	0.0	0.0	0.0	0.0	
100.0	100.0	99.7	4.4	0.0	0.4	0.0	1.8	0.0	
100.0	100.0	100.0	175.1	0.0	58.9	0.0	76.4	0.0	
100.0	100.0	100.0	0.9	0.0	2.5	0.0	1.2	0.0	
100.0	100.0	100.0	4.6	0.0	15.9	0.0	34.5	0.0	
100.0			0.0	0.0	0.0	0.0	0.0	0.0	
100.0	100.0	100.0	0.7	0.0	6.2	0.0	6.9	0.0	
100.0	100.0		0.3	0.0	0.3	0.0	0.0	0.0	
100.0	100.0		11.8	0.0	0.1	0.0	0.0	0.0	
100.0	100.0	100.0	156.8	0.0	33.8	0.0	33.8	0.0	
100.0	84.7	100.0	10.9	0.0	13.7	1.1	8.6	0.0	
100.0	78.8	100.0	8.1	0.0	9.6	1.1	7.9	0.0	
100.0	100.0	100.0	1.6	0.0	2.2	0.0	0.6	0.0	
100.0	100.0		0.1	0.0	0.5	0.0	0.0	0.0	
100.0	100.0	100.0	0.0	0.0	1.4	0.0	0.0	0.0	
100.0			1.1	0.0	0.0	0.0	0.0	0.0	
100.0	100.0	100.0	23.2	0.0	2.9	0.0	1.6	0.0	
100.0	100.0	100.0	17.0	0.0	2.7	0.0	1.6	0.0	
			0.0	0.0	0.0	0.0	0.0	0.0	
100.0	100.0	100.0	6.2	0.0	0.2	0.0	0.0	0.0	
100.0	99.4	100.0	0.0	0.0	378.6	1.2	63.9	0.0	
			0.0	0.0	0.0	0.0	0.0	0.0	
	100.0	100.0	0.0	0.0	378.6	0.0	63.9	0.0	
			0.0	0.0	0.0	0.0	0.0	0.0	
100	-100	100	0	0	0	1	0	0	

			0	0	0	0	0	0	
100.0	100.0	-100.0	0.0	0.0	0.0	0.0	0.0	33.7	
		-100.0	0.0	0.0	0.0	0.0	0.0	33.7	
100.0	100.0		0.0	0.0	0.0	0.0	0.0	0.0	
99.4	-20.7	85.5	9.9	0.0	0.5	0.8	6.1	0.5	
100.0	100.0		0.2	0.0	0.1	0.0	0.0	0.0	
100.0	-100.0	85.1	7.3	0.0	0.0	0.8	6.0	0.5	
97.6	100.0	100.0	2.4	0.0	0.4	0.0	0.2	0.0	
	100.0		0.0	0.0	0.0	0.0	0.0	0.0	
100.0		100.0	0.0	0.0	0.0	0.0	0.0	0.0	
-90.3	-100.0	-100.0	1.6	32.4	0.0	5.6	0.0	0.1	
	-100.0		0.0	0.0	0.0	0.3	0.0	0.0	
-90.3	-100.0	-100.0	1.6	32.4	0.0	5.3	0.0	0.1	
			0.0	0.0	0.0	0.0	0.0	0.0	
			0.0	0.0	0.0	0.0	0.0	0.0	
			0.0	0.0	0.0	0.0	0.0	0.0	
			0.0	0.0	0.0	0.0	0.0	0.0	
83.4	100.0		2.2	0.2	4.9	0.0	0.0	0.0	
58.3	100.0		0.1	0.0	0.0	0.0	0.0	0.0	
68.0	-62.7	100.0	1.8	0.3	0.3	1.2	1.0	0.0	
100.0	99.9	90.6	6.9	0.0	5.8	0.0	4.2	0.2	
22.1	18.4	100.0	1.6	1.0	0.1	0.1	0.0	0.0	
100.0	93.1		0.2	0.0	0.1	0.0	0.0	0.0	
100.0	-100.0		0.2	0.0	0.0	0.0	0.0	0.0	
			0.0	0.0	0.0	0.0	0.0	0.0	
	100.0		0.0	0.0	0.0	0.0	0.0	0.0	
100.0	-29.5		0.1	0.0	0.2	0.3	0.0	0.0	
			0.0	0.0	0.0	0.0	0.0	0.0	
100.0	100.0	100.0	8.5	0.0	24.8	0.0	33.3	0.0	
75.3	94.0	70.5	253.6	35.8	503.4	15.5	200.1	34.7	

5

						:			
3/1	3/2	2/1	3	2	1	99/98	95/94	/1998 990	
						3	2	1	
-52.6	-71.5	66.0	2.9	8.4	7.5	241.0	844.5	508.8	
-54.0	-72.5	67.4	2.6	7.8	6.9	215.8	785.7	469.4	
-36.0	-57.2	49.6	0.3	0.6	0.6	25.2	58.9	39.3	
-95.4	-99.2	517.0	0.0	0.5	0.1	0.4	54.8	8.9	
63.7	-52.9	248.0	0.0	0.1	0.0	2.8	6.0	1.7	
269.6	-16.3	341.4	3.6	3.6	1.2	300.7	359.1	81.4	
330.9	-17.1	419.9	2.1	2.1	0.6	174.8	210.9	40.6	
128.7		-100.0	0.0	0.0	0.0	0.4	0.0	0.2	
209.0	-15.3	264.9	1.5	1.5	0.6	125.4	148.1	40.6	
209.0	61.1	91.8	0.1	0.0	0.0	4.7	2.9	1.5	
132.7	5.0	121.6	0.1	0.0	0.0	4.5	4.3	1.9	
189.0	-11.2	225.4	1.0	1.0	0.4	86.8	97.8	30.0	
	-100.0		0.0	0.0	0.0	0.0	0.0	0.0	
-100.0		-100.0	0.0	0.0	0.0	0.0	0.0	0.1	
-100.0		-100.0	0.0	0.0	0.0	0.0	0.0	0.0	
		-58.0	0.8	0.0	0.0	70.8	0.0	0.0	
-100.0	-100.0	-90.6	0.0	0.0	0.0	0.0	0.0	0.0	
	-63.0		0.0	0.0	0.0	0.7	1.9	0.0	
-48.5	-84.0	220.9	0.2	1.0	0.4	15.4	95.9	29.9	
576.7	-68.0	2,015.6	6.1	16.0	1.1	514.0	1,606.9	76.0	
778.1	-72.5	3,093.1	3.5	10.7	0.5	294.7	1,071.5	33.6	
-93.3		-100.0	0.0	0.0	0.0	0.0	0.0	0.3	
420.1	-59.1	1,171.1	2.6	5.3	0.6	219.0	535.2	42.1	
	153.5		0.0	0.0	0.0	0.3	0.1	0.0	
150.0	5.1	137.9	12.0	9.5	5.9	1,003.7	955.1	401.5	
29.3	-74.5	407.1	0.3	1.0	0.3	24.8	97.2	19.2	

166.3	14.2	133.1	9.5	6.9	4.4	795.9	696.8	298.9	
119.3	13.6	93.1	2.2	1.6	1.2	182.9	161.0	83.4	
-14.6	53.0	-44.2	20.6	11.2	29.6	1,725.3	1,128.0	2,019.9	
-100.0		-100.0	0.0	0.0	16.0	0.0	0.0	1,090.7	
219.6		-100.0	4.0	0.0	1.5	336.5	0.0	105.3	
87.4	49.1	25.7	10.0	5.6	6.5	836.6	561.2	446.4	
46.1	-2.5	49.7	6.6	5.6	5.5	551.4	565.3	377.5	
1,788.3	-42.4		0.0	0.0	0.0	0.9	1.5	0.0	
-97.5	-93.5	-61.8	0.3	3.8	14.8	24.8	385.0	1,007.4	
-98.9	-97.1	-63.3	0.1	3.6	14.3	10.5	358.0	976.1	
-54.1	-46.9	-13.5	0.2	0.3	0.5	14.3	27.0	31.2	
482.8	142.6	140.3	6.9	2.4	1.5	579.7	239.0	99.5	
-100.0	-100.0	53.1	0.0	0.0	0.0	0.0	0.2	0.1	
1,461.6	144.0	540.0	4.3	1.5	0.3	360.2	147.6	23.1	
187.7	140.7	19.6	2.6	0.9	1.1	219.5	91.2	76.3	
154.6	-33.5	282.7	0.1	0.1	0.0	8.5	12.7	3.3	
4.2	5.0	-0.8	0.0	0.0	0.0	1.7	1.6	1.7	
74.5	-4.7	83.0	12.0	10.5	8.4	1,004.1	1,053.5	575.6	
-66.4	-71.4	17.6	0.0	0.0	0.0	0.3	1.1	0.9	
74.7	-4.6	83.1	12.0	10.5	8.4	1,003.7	1,052.4	574.6	
2,434.9	25.9	1,913.7	6.4	4.3	0.3	540.4	429.3	21.3	
-99.3	-99.6	76.6	0.0	0.4	0.3	0.1	36.6	20.7	
	-28.7		3.3	3.9	0.0	280.1	392.6	0.6	
		40.4	3.1	0.0	0.0	260.2	0.1	0.1	
-10.1	-14.1	4.6	14.8	14.4	20.3	1,245.4	1,449.2	1,385.8	
74.7	-37.5	179.3	0.5	0.6	0.3	40.3	64.4	23.1	
500.6	45.4	313.0	0.6	0.3	0.1	46.4	31.9	7.7	
159.0	20.8	114.4	0.4	0.3	0.2	31.4	26.0	12.1	
263.4	-1.6	269.3	1.9	1.6	0.6	157.3	159.9	43.3	
-64.9	-58.0	-16.3	0.2	0.4	0.7	16.5	39.2	46.8	
79.1	16.3	54.1	7.8	5.6	5.4	654.7	563.2	365.5	

89.2	-75.8	682.1	1.3	4.4	0.8	106.3	439.5	56.2	
-23.5	-45.8	41.0	0.3	0.5	0.5	27.2	50.1	35.6	
128.3	-58.5	450.4	0.2	0.5	0.1	19.6	47.1	8.6	
-38.2	-74.7	144.5	0.0	0.0	0.0	0.2	0.9	0.4	
	-1.8		0.0	0.0	0.0	0.1	0.2	0.0	
22.9	-16.5	47.3	100. 0	100. 0	100. 0	8,388. 5	10,052. 0	6,825.3	

						:			
3/1	3/2	2/1	3	2	1	99/98	95/94	90/98	
						3	2	1	
-72.1	-14.4	-67.4	6.3	9.0	32.5	595.9	696.4	2,138.3	
-72.6	-9.9	-69.6	6.2	8.3	32.2	580.1	643.7	2,121.0	
-8.7	-70.0	204.5	0.2	0.7	0.3	15.8	52.7	17.3	
-92.6	-61.9	-80.6	0.0	0.0	0.0	0.2	0.5	2.7	
-79.4	-17.0	-75.1	0.0	0.0	0.1	0.8	1.0	4.1	
274.2	231.3	13.0	3.2	1.2	1.2	302.9	91.4	80.9	
2,738.2	1,406.5	88.4	2.7	0.2	0.1	249.5	16.6	8.8	
-16.4	-54.7	84.6	0.2	0.6	0.4	20.8	46.0	24.9	
-31.0	12.9	-38.9	0.3	0.4	0.7	32.6	28.8	47.2	
73.1	35.1	28.1	0.4	0.4	0.4	40.5	30.0	23.4	
2,608.2	23.0	2,101.2	1.1	1.1	0.1	105.7	85.9	3.9	
128.2	18.0	93.4	28.1	29.0	17.6	2,640.6	2,238.2	1,157.4	
-49.4	-54.6	11.6	0.5	1.3	1.3	44.4	97.8	87.6	
3.6	59.3	-35.0	3.4	2.6	4.7	320.4	201.1	309.1	
-81.5	-26.7	-74.8	0.0	0.0	0.1	1.3	1.8	7.1	
-50.7	-11.0	-44.6	1.9	2.6	5.6	181.0	203.5	367.3	
643.2	83.7	304.6	10.3	6.8	2.0	970.4	528.3	130.6	
527.8	-74.0	2,312.1	0.7	3.4	0.2	69.3	266.3	11.0	
330.8	12.2	284.1	11.2	12.2	3.7	1,053.8	939.5	244.6	
242.7	11.6	207.1	15.2	16.5	6.3	1,425.0	1,277.3	415.9	
1,193.4	66.7	676.0	11.9	8.7	1.3	1,119.3	671.6	86.5	
-76.3	-41.6	-59.4	0.4	0.8	2.2	34.2	58.6	144.2	
67.2	-67.2	408.9	1.5	5.4	1.2	137.4	418.4	82.2	
14.7	-6.2	22.3	1.2	1.6	1.6	117.4	125.1	102.3	
2,912.4	369.1	542.2	0.2	0.0	0.0	16.7	3.6	0.6	
704.7	3.3	679.1	3.8	4.5	0.7	359.3	347.8	44.6	
696.5	18.0	575.1	3.7	3.8	0.7	343.9	291.4	43.2	
1,766.6	-88.5	16,118.1	0.0	0.0	0.0	0.1	0.5	0.0	
944.4	-72.6	3,706.2	0.2	0.7	0.0	15.3	55.9	1.5	
271.8	5.6	252.0	7.1	8.2	2.7	667.9	632.4	179.6	
1,184.0	409.0	152.2	7.1	1.7	0.8	667.3	131.1	52.0	
-100.0	-100.0	291.3	0.0	6.5	1.9	0.0	498.3	127.3	
-57.4	-51.6	-12.0	0.0	0.0	0.0	0.1	0.2	0.2	

			0.0	0.0	0.0	0.0	0.0	0.0	
518.2	-82.6	3,443.7	0.0	0.0	0.0	0.5	2.8	0.1	
498.3	-83.6	3,551.2	0.0	0.0	0.0	0.4	2.3	0.1	
			0.0	0.0	0.0	0.1	0.0	0.0	
411.4	-86.0	3,551.2	0.0	0.0	0.0	0.3	2.3	0.1	
57.0	-12.2	78.7	1.6	2.2	1.4	148.7	169.2	94.7	
-79.2	-35.1	-67.9	0.2	0.3	1.0	14.4	22.1	69.0	
690.7	-15.7	837.8	0.9	1.3	0.2	81.5	96.7	10.3	
243.7	4.7	228.4	0.6	0.7	0.2	52.8	50.5	15.4	
4,166.3	67.9	2,441.6	0.0	0.0	0.0	0.6	0.4	0.0	
80.3	82.5	-1.2	0.0	0.0	0.0	0.4	0.2	0.2	
71,326. 2	75.4	40,610. 7	1.6	1.1	0.0	145.7	83.1	0.2	
	-31.7		0.6	1.1	0.0	55.8	81.6	0.0	
43,995. 7	6,193. 3	600.7	1.0	0.0	0.0	90.0	1.4	0.2	
106.5	-49.7	310.4	0.0	0.0	0.0	0.5	0.9	0.2	
8.6	-73.5	310.4	0.0	0.0	0.0	0.3	0.9	0.2	
			0.0	0.0	0.0	0.2	0.0	0.0	
-2.5	-52.8	106.6	0.6	1.6	0.9	56.6	120.0	58.1	
-84.0	-76.9	-30.9	0.3	1.4	2.4	25.6	110.9	160.5	
-91.7	-5.5	-91.2	0.3	0.3	4.6	25.5	26.9	305.1	
-4.1	63.3	-41.2	3.4	2.5	5.1	321.2	196.7	334.8	
-11.9	119.0	-59.8	0.1	0.0	0.1	6.9	3.1	7.8	
3.4	69.6	-39.1	0.1	0.1	0.1	9.2	5.4	8.9	
193.1	4,383. 7	-93.5	0.4	0.0	0.2	33.8	0.8	11.5	
-38.6	-33.4	-7.9	0.5	0.9	1.2	48.9	73.4	79.7	
-99.6	-99.8	122.4	0.0	2.6	1.4	0.4	204.0	91.7	
26.6	-33.1	89.1	0.3	0.5	0.3	27.0	40.3	21.3	
76.7	87.0	-5.5	25.6	16.6	20.7	2,404.9	1,285.9	1,361.3	
42.6	21.6	17.3	100.0	100.0	100.0	9,395.1	7,724.7	6,587.1	

AFTA

7

						:			
3/1	3/2	2/1	3	2	1	99/98	95/94	/1998 990	
						3	2	1	
1484.9	-70.4	5246.7	0.2	0.9	0.0	1.8	6.0	0.1	
	-100.0		0.0	0.1	0.0	0.0	0.5	0.0	
1484.9	-67.6	4788.4	0.2	0.8	0.0	1.8	5.5	0.1	
-100.0	-100.0	1380.2	0.0	0.4	0.1	0.0	2.5	0.2	
284.9	-23.4	402.2	0.1	0.2	0.1	1.1	1.5	0.3	
95.0	-44.0	248.2	0.1	0.2	0.1	0.7	1.3	0.4	
-100.0	-100.0	247.2	0.0	0.1	0.1	0.0	0.6	0.2	
-100.0	-100.0	394.5	0.0	0.1	0.0	0.0	0.6	0.1	
1040.5	1895.8	-42.9	0.1	0.0	0.0	0.7	0.0	0.1	
	408.1		0.5	0.1	0.0	4.1	0.8	0.0	
6454.5	415.0	1172.7	0.0	0.0	0.0	0.4	0.1	0.0	
522.6	735.1	-25.4	0.1	0.0	0.0	0.9	0.1	0.1	
-100.0		-100.0	0.0	0.0	0.0	0.0	0.0	0.1	
2947.4	735.1	264.9	0.1	0.0	0.0	0.9	0.1	0.0	
-55.7	-72.9	63.7	1.4	5.6	8.3	10.5	38.9	23.8	
-59.2	-74.5	59.8	1.3	5.5	8.3	9.7	38.0	23.8	
16780.0	-10.1	18680.0	0.1	0.1	0.0	0.8	0.9	0.0	
788.4	-29.0	1151.3	0.8	1.3	0.2	6.3	8.9	0.7	
459.1	-99.3	80545.5	0.0	1.3	0.0	0.1	8.9	0.0	
-99.4	-93.0	-91.0	0.0	0.0	0.2	0.0	0.1	0.6	
9333.1		-100.0	0.8	0.0	0.0	6.3	0.0	0.1	
36.6	-18.2	67.0	31.7	42.7	61.6	241.8	295.5	177.0	
-100.0		-100.0	0.0	0.0	29.2	0.0	0.0	83.8	
-100.0		-100.0	0.0	0.0	0.4	0.0	0.0	1.1	
-100.0		-100.0	0.0	0.0	2.7	0.0	0.0	7.9	
	-66.5		12.9	42.5	29.3	98.4	294.1	84.3	
#DIV/0!	10049.9	#DIV/0!	18.8	0.2	0.0	143.4	1.4	0.0	
-99.6	-96.5	-87.7	0.0	0.6	11.7	0.1	4.1	33.7	
-100.0	-100.0	-100.0	0.0	0.0	11.7	0.0	0.0	33.7	
	-96.5		0.0	0.6	0.0	0.1	4.1	0.0	
658.7	-26.3	929.9	0.7	1.0	0.2	5.1	6.9	0.7	

903.3	49.5	571.0	0.6	0.5	0.2	4.8	3.2	0.5	
38.1	-92.9	1840.5	0.0	0.5	0.1	0.3	3.7	0.2	
25.2	-83.0	637.8	0.0	0.1	0.0	0.1	0.5	0.1	
529.2	40.6	347.5	0.0	0.0	0.0	0.4	0.3	0.1	
1044.6	50.9	658.5	19.8	14.5	4.6	151.3	100.2	13.2	
	-100.0		0.0	0.0	0.0	0.0	0.3	0.0	
1044.6	51.3	656.4	19.8	14.4	4.6	151.3	100.0	13.2	
#DIV/0!	68.6	#DIV/0!	36.1	23.6	0.0	275.2	163.2	0.0	
	-7.5		19.8	23.6	0.0	151.1	163.2	0.0	
			16.3	0.0	0.0	124.1	0.0	0.0	
-61.1	-74.5	52.3	0.3	1.1	1.7	1.9	7.5	4.9	
			0.3	0.0	0.0	2.4	0.0	0.0	
2087.6	243.5	536.9	0.7	0.2	0.1	5.1	1.5	0.2	
-8.9	-54.1	98.5	0.0	0.1	0.1	0.4	0.8	0.4	
	100.8		2.9	1.6	0.0	22.1	11.0	0.0	
43571.4	-49.9	87114.3	0.2	0.4	0.0	1.5	3.1	0.0	
-42.1	2804.2	-98.0	1.4	0.1	6.2	10.4	0.4	17.9	
15724.6	10.5	14223.0	0.6	0.6	0.0	4.8	4.4	0.0	
-10.9	-51.0	81.6	1.6	3.5	4.7	11.9	24.3	13.4	
	-82.4		0.2	1.1	0.0	1.3	7.5	0.0	
911.2	1.5	896.6	0.1	0.1	0.0	0.6	0.6	0.1	
165.4	10.2	140.9	100.0	100.0	100.0	762.3	691.9	287.2	
						8388.5	10052.0	6825.3	
						9.1	6.9	4.2	%

AFTA

8

						:			
3/1	3/2	2/1	3	2	1	99/98	95/94	990/1989	
						3	2	1	
-72.3	0.7	-72.5	11.7	10.8	54.0	578.1	574.2	2086.8	
-87.4	-50.3	-74.7	5.2	9.8	53.5	259.5	522.3	2064.2	
1311.2	514.1	129.8	6.4	1.0	0.6	318.6	51.9	22.6	
-91.6	-17.9	-89.7	0.0	0.0	0.1	0.2	0.3	2.6	
-100.0	-100.0	75.5	0.0	0.0	0.0	0.0	0.3	0.2	
-62.0	-55.4	-14.8	0.7	1.4	2.3	33.7	75.4	88.5	
-20.8	-62.5	111.1	0.1	0.2	0.2	4.6	12.3	5.8	
-91.2		44.8			0.8	2.6	42.3	29.2	
-50.4	27.3	-61.1	0.5	0.4	1.4	26.5	20.8	53.5	
4353.3	250.1	1171.9	0.2	0.1	0.0	9.4	2.7	0.2	
2983.1	22.6	2414.8	2.1	1.6	0.1	104.7	85.4	3.4	
102.6	-1.9	106.6	38.8	36.9	24.6	1921.9	1959.6	948.5	
-79.7	-80.4	4.0	0.4	1.7	2.3	17.7	90.7	87.2	
-93.0	-88.7	-38.3	0.2	1.3	3.0	8.1	71.6	116.1	
-99.5	-96.0	-88.5	0.0	0.0	0.2	0.0	0.8	7.1	
-94.9	-90.7	-45.2	0.4	3.7	9.2	18.0	194.0	354.1	
-87.2	-96.8	300.7	0.3	9.9	3.4	16.7	524.8	131.0	
2910.0	-79.2	14399.6	1.1	4.9	0.0	53.7	258.6	1.8	
619.7	120.7	226.1	36.5	15.4	6.5	1807.6	819.1	251.2	
404.0	10.8	354.9	28.6	24.1	7.3	1414.8	1277.1	280.7	
1390.0	66.8	793.1	22.8	12.7	2.0	1129.0	676.7	75.8	
-7.4	-62.7	148.0	0.4	1.0	0.5	19.2	51.3	20.7	
67.8	-67.6	418.2	2.8	8.0	2.1	137.1	423.4	81.7	
-97.4	-97.8	19.7	0.1	2.3	2.6	2.6	122.1	102.0	
23070.9	3473.5	548.4	2.6	0.1	0.0	126.9	3.6	0.5	
659.1	3.1	636.3	3.1	2.8	0.5	153.0	148.5	20.2	
201.1	-38.3	388.2	1.2	1.7	0.5	57.2	92.8	19.0	
-100.0	-100.0	19040.0	0.0	0.0	0.0	0.0	0.5	0.0	
8172.7	73.6	4665.4	1.9	1.0	0.0	95.8	55.2	1.2	
-36.3	-89.7	520.3	1.2	10.6	2.3	57.8	562.2	90.6	
-100.0	-100.0	9394.4	0.0	1.6	0.0	0.0	83.7	0.9	
-100.0	-100.0	430.1	0.0	9.0	2.3	0.0	475.5	89.7	
-100.0	-100.0	13300.0	0.0	0.0	0.0	0.0	0.2	0.0	
153962.7		7297.3	1.2	0.1	0.0	57.8	2.8	0.0	

					0.0	0.0	0.0	0.0	
487.3	-49.6	1065.9	0.0	0.0	0.0	0.4	0.7	0.1	
			0.0	0.0	0.0	0.0	0.0	0.0	
	-49.6	1065.9	0.0	0.0	0.0	0.4	0.7	0.1	
89.3	-7.9	105.6	1.3	1.3	0.9	64.3	69.8	34.0	
-52.5	-57.7	12.3	0.1	0.3	0.4	6.9	16.4	14.6	
50.7	53.4	-1.8	0.2	0.1	0.2	10.1	6.6	6.7	
272.4	0.9	269.2	1.0	0.9	0.3	47.3	46.9	12.7	
2033.3	-87.0	16266.7	0.0	0.0	0.0	0.0	0.2	0.0	
47.7	-2.1	50.8	0.0	0.0	0.0	0.2	0.2	0.1	
3412557.1	155.0	1338214.3	2.4	0.9	0.0	119.4	46.8	0.0	
			0.0	0.9	0.0	1.4	45.9	0.0	
3373357.1	12414.1	26857.1	2.4	0.0	0.0	118.1	0.9	0.0	
180.4	-56.2	539.6	0.0	0.0	0.0	0.4	0.8	0.1	
177.6	-56.6	539.6	0.0	0.0	0.0	0.4	0.8	0.1	
			0.0	0.0	0.0	0.0	0.0	0.0	
					0.0	0.0	0.0	0.0	
67.9	-4.4	75.6	0.3	0.3	0.3	17.0	17.8	10.1	
-45.1	-23.1	-28.6	0.1	0.2	0.3	7.0	9.1	12.7	
-51.1	179.6	-82.5	0.3	0.1	0.9	16.1	5.8	32.9	
178.3	44.1	93.1	5.1	3.3	2.3	251.8	174.8	90.5	
27008.2	196.0	9057.1	0.1	0.0	0.0	6.6	2.2	0.0	
140.1	356.3	-47.4	0.2	0.0	0.1	8.4	1.8	3.5	
280.1	79278.2	-99.5	0.6	0.0	0.2	31.0	0.0	8.1	
60.0	-54.1	248.9	0.5	1.0	0.4	23.3	50.8	14.6	
-98.2	-99.9	2636.3	0.0	0.1	0.0	0.0	3.8	0.1	
3776.4	-36.2	5974.6	0.1	0.2	0.0	6.5	10.2	0.2	
					0.0	0.1	0.0	0.0	
-6.5	-45.9	72.8	2.5	4.3	3.4	123.6	228.5	132.2	
28.2	-6.8	37.5	100.0	100.0	100.0	4949.5	5309.1	3861.0	
						9395.1	7724.7	6587.1	
						53	69	59	
									%

						:			
3/1	3/2	2/1	3	2	1	99/98	95/94	90/89	
						3	2	1	
-100.0		-100.0	0.0	0.0	0.1	0.0	0.0	0.1	
-86.5	100.1	-93.2	0.0	0.0	0.1	0.0	0.0	0.0	
-100.0		-100.0	0.0	0.0	0.1	0.0	0.0	0.0	
-50.8	100.1	-75.4	0.0	0.0	0.0	0.0	0.0	0.0	
	-100.0		0.0	1.0	0.0	0.0	0.6	0.0	
			1.0	0.0	0.0	0.1	0.0	0.0	
102.0	-55.7	356.1	0.4	0.2	0.1	0.1	0.1	0.0	
	-100.0		0.0	0.0	0.0	0.0	0.0	0.0	
	-100.0		0.0	0.0	0.0	0.0	0.0	0.0	
102.0	-44.8	266.1	0.4	0.2	0.1	0.1	0.1	0.0	
	-81.9		14.4	19.2	0.0	1.9	10.3	0.0	
	-82.5		13.9	19.2	0.0	1.8	10.3	0.0	
			0.5	0.0	0.0	0.1	0.0	0.0	
-93.8	-99.7	1751.8	0.2	16.6	1.3	0.0	8.9	0.5	
	-100.0		0.0	16.6	0.0	0.0	8.9	0.0	
-99.2	-90.1	-91.6	0.0	0.1	1.3	0.0	0.0	0.5	
			0.2	0.0	0.0	0.0	0.0	0.0	
-100.0	-100.0	-99.7	0.0	0.0	24.4	0.0	0.0	8.9	
-100.0		-100.0	0.0	0.0	2.9	0.0	0.0	1.1	
-100.0		-100.0	0.0	0.0	21.5	0.0	0.0	7.9	
	-100.0		0.0	0.0	0.0	0.0	0.0	0.0	
-99.3	-99.9	895.1	0.0	3.5	0.5	0.0	1.9	0.2	
			0.0	0.0	0.0	0.0	0.0	0.0	
-99.9	-100.0	895.1	0.0	3.5	0.5	0.0	1.9	0.2	
	-97.1		4.2	35.4	0.0	0.5	19.0	0.0	
			12.3	0.0	0.0	1.6	0.0	0.0	
			0.2	0.0	0.0	0.0	0.0	0.0	
			12.1	0.0	0.0	1.6	0.0	0.0	
	0.1		8.6	2.1	0.0	1.1	1.1	0.0	
			1.4	0.0	0.0	0.2	0.0	0.0	
			24.6	0.0	0.0	3.2	0.0	0.0	
	-25.1		1.6	0.5	0.0	0.2	0.3	0.0	
	250.5		7.6	0.5	0.0	1.0	0.3	0.0	
	-60.9		9.2	5.7	0.0	1.2	3.1	0.0	

-89.5	438.6	-98.1	14.3	0.6	48.3	1.9	0.3	17.7	
	-100.0		0.0	0.5	0.0	0.0	0.3	0.0	
-100.0	-100.0	-18.5	0.0	14.1	25.2	0.0	7.5	9.2	
-64.8	-75.9	46.2	100.0	100.0	100.0	12.9	53.6	36.7	
						4949.5	5309.1	3861.0	AFTA
						9395.1	7724.7	6587.1	
						0.3	1.0	0.9	AFTA %
						0.1	0.7	0.6	%

						:			
3/1	3/2	2/1	3	2	1	99/98	95/94	90/89	
						3	2	1	
-92.5	-96.5	115.1	0.2	2.1	2.1	1.6	45.2	21.0	
	-56.8		0.1	0.1	0.0	0.8	1.9	0.0	
-96.4	-98.2	106.2	0.1	2.0	2.1	0.8	43.3	21.0	
-97.0	-51.0	-93.8	0.0	0.0	0.2	0.1	0.1	2.4	
	-100.0		0.0	0.0	0.0	0.0	0.3	0.0	
-77.1	-66.0	-32.7	1.8	1.9	6.1	13.9	41.0	60.8	
-99.6	-93.3	-93.4	0.0	0.0	0.3	0.0	0.2	2.5	
-100.0	-100.0	120.4	0.0	1.6	1.6	0.0	35.9	16.3	
-66.9	185.0	-88.4	1.8	0.2	4.2	13.9	4.9	42.0	
	409.7		0.9	0.1	0.0	6.9	1.3	0.0	
120,455.9	-0.4	120,949.6	10.1	3.7	0.0	79.2	79.5	0.1	
-27.8	-62.2	91.0	58.5	55.9	64.4	459.8	1,216.6	636.8	
-76.8	-73.7	-11.6	2.0	2.8	6.9	15.8	60.0	67.9	
52.8	-76.0	537.8	0.4	0.6	0.2	3.1	12.9	2.0	
-100.0	-100.0	-91.9	0.0	0.0	0.7	0.0	0.6	7.0	
-95.2	-80.4	-75.5	1.6	2.9	26.3	12.5	63.9	260.6	
-89.7	-94.2	77.1	1.3	7.9	9.9	10.1	172.9	97.6	
1,468.1	-89.3	14,491.8	3.5	11.8	0.2	27.6	257.1	1.8	
95.4	-39.8	224.7	49.7	29.8	20.2	390.7	649.1	199.9	
-31.2	-77.2	201.4	15.7	24.8	18.1	123.3	540.2	179.2	
-64.0	-93.2	431.7	0.7	3.8	1.6	5.7	83.7	15.8	
-82.1	-93.6	180.4	0.2	1.3	1.0	1.8	28.0	10.0	
48.4	-71.5	421.1	14.6	18.5	7.8	114.7	402.9	77.3	
-100.0	-100.0	-67.2	0.0	1.1	7.7	0.0	24.9	76.1	
1,386.4	82.2	715.9	0.1	0.0	0.0	1.2	0.6	0.1	
392.9	-74.8	1,859.7	2.2	3.1	0.4	17.1	68.0	3.5	
213.1	-32.9	367.0	1.3	0.7	0.3	10.1	15.1	3.2	
	-100.0		0.0	0.0	0.0	0.0	0.5	0.0	
2,861.5	-86.7	22,152.4	0.9	2.4	0.0	7.0	52.4	0.2	
-100.0	-100.0	709.2	0.0	1.4	0.4	0.0	30.5	3.8	
-100.0	-100.0	2,176.2	0.0	0.3	0.0	0.0	5.7	0.2	
-100.0	-100.0	531.2	0.0	1.0	0.4	0.0	22.1	3.5	
-100.0	-100.0	5,872.2	0.0	0.0	0.0	0.0	0.0	0.0	

-93.2	-99.9	11,459.8	0.0	0.1	0.0	0.0	2.7	0.0	
	70.7		0.0	0.0	0.0	0.2	0.1	0.0	
6.1	-96.7	3,082.4	0.2	1.7	0.1	1.3	37.6	1.2	
344.1	-96.8	13,602.5	0.0	0.1	0.0	0.1	2.4	0.0	
-45.9	-95.0	972.7	0.0	0.3	0.1	0.3	5.8	0.5	
42.1	-97.0	4,630.4	0.1	1.3	0.1	0.9	29.4	0.6	
			0.0	0.0	0.0	0.1	0.0	0.0	
	-84.7		0.8	1.8	0.0	5.9	39.0	0.0	
	-97.1		0.1	1.8	0.0	1.1	38.6	0.0	
	1,416.6		0.6	0.0	0.0	4.8	0.3	0.0	
280.8	-44.7	588.1	0.0	0.0	0.0	0.3	0.6	0.1	
280.8	-44.7	588.1	0.0	0.0	0.0	0.3	0.6	0.1	
-54.8	100.9	-77.5	0.3	0.1	0.6	2.5	1.3	5.6	
-66.4	120.7	-84.8	0.3	0.0	0.6	2.1	0.9	6.1	
-27.5	287.1	-81.3	1.3	0.1	1.4	10.2	2.6	14.1	
1.2	-45.8	86.7	4.2	2.8	3.3	32.8	60.5	32.4	
	788.5		0.2	0.0	0.0	1.9	0.2	0.0	
-93.6	-51.8	-86.7	0.0	0.0	0.3	0.2	0.3	2.5	
103.8	63,860.8	-99.7	2.0	0.0	0.8	15.9	0.0	7.8	
-100.0	-100.0	2,287.9	0.0	0.1	0.0	0.0	1.1	0.0	
			0.7	0.0	0.0	5.1	0.0	0.0	
-52.6	-42.7	-17.2	0.7	0.5	1.2	5.8	10.1	12.2	
-20.6	-63.9	120.0	100.0	100.0	100.0	786.2	2,177.1	989.6	
						4949.5	5309.1	3861.0	AFTA
						9395.1	7724.7	6587.1	
						15.9	41.0	25.6	AFTA %
						8.4	28.2	15.0	%

						:			
3/1	3/2	2/1	3	2	1	99/98	95/94	990/1989	
						3	2	1	
1451.3	-61.2	3894.8	4.9	29.1	0.3	1.7	4.5	0.1	
1451.3	-61.2	3894.8	4.9	29.1	0.3	1.7	4.5	0.1	
	-100.0		0.0	0.1	0.0	0.0	0.0	0.0	
-100.0	-100.0	1108.8	0.0	4.0	0.1	0.0	0.6	0.1	
-100.0	-100.0	1108.8	0.0	4.0	0.1	0.0	0.6	0.1	
-100.0		-100.0	0.0	0.0	0.0	0.0	0.0	0.0	
	-100.0		0.0	7.3	0.0	0.0	1.1	0.0	
	-100.0		0.0	7.3	0.0	0.0	1.1	0.0	
	-100.0		0.0	7.7	0.0	0.0	1.2	0.0	
	-100.0		0.0	7.7	0.0	0.0	1.2	0.0	
-100.0		-100.0	0.0	0.0	97.3	0.0	0.0	33.7	
-100.0		-100.0	0.0	0.0	97.3	0.0	0.0	33.7	
-94.1	-96.3	60.5	0.1	5.0	1.4	0.0	0.8	0.5	
-100.0	-100.0	60.5	0.0	5.0	1.4	0.0	0.8	0.5	
			0.1	0.0	0.0	0.0	0.0	0.0	
43194.8	480.2	7361.4	90.6	36.1	0.2	32.4	5.6	0.1	
	-100.0		0.0	1.8	0.0	0.0	0.3	0.0	
43194.8	510.6	6990.2	90.6	34.3	0.2	32.4	5.3	0.1	
			0.5	0.0	0.0	0.2	0.0	0.0	
			0.1	0.0	0.0	0.0	0.0	0.0	
	-72.8		0.9	8.0	0.0	0.3	1.2	0.0	
-100.0	-100.0	-98.9	0.0	0.0	0.6	0.0	0.0	0.2	
	1282.4		2.9	0.5	0.0	1.0	0.1	0.0	
	-100.0		0.0	0.0	0.0	0.0	0.0	0.0	
	-100.0		0.0	0.1	0.0	0.0	0.0	0.0	
	-100.0		0.0	1.9	0.0	0.0	0.3	0.0	
3.3	131.3	-55.3	100.0	100.0	100.0	35.8	15.5	34.7	
						4949.5	5309.1	3861.0	AFTA
						9395.1	7724.7	6587.1	
						0.7	0.3	0.9	AFTA %
						0.4	0.2	0.5	%

						:			
3/1	3/2	2/1	3	2	1	99/98	95/94	990/1989	
						3	2	1	
2,005.7	50.0	1,303.8	1.2	0.4	0.1	3.0	2.0	0.1	
38.7	531.6	-78.0	0.1	0.0	0.1	0.2	0.0	0.1	
14,144.0	69.0	8,329.2	0.1	0.0	0.0	0.2	0.1	0.0	
			0.5	0.0	0.0	1.2	0.0	0.0	
93.5	-51.6	300.1	2.3	2.4	1.5	5.9	12.3	3.1	
40.9	-63.0	281.3	1.7	2.3	1.5	4.3	11.7	3.1	
	-100.0		0.0	0.1	0.0	0.0	0.5	0.0	
	1,802.4		0.6	0.0	0.0	1.6	0.1	0.0	
147.6	990.6	-77.3	1.7	0.1	0.9	4.4	0.4	1.8	
129.2	197.1	-22.8	69.0	11.7	38.2	175.1	58.9	76.4	
-21.3	-63.6	116.4	0.4	0.5	0.6	0.9	2.5	1.2	
-86.7	-71.1	-53.9	1.8	3.2	17.2	4.6	15.9	34.5	
			0.0	0.0	0.0	0.0	0.0	0.0	
-90.1	-89.1	-9.3	0.3	1.2	3.4	0.7	6.2	6.9	
	-11.7		0.1	0.1	0.0	0.3	0.3	0.0	
	10,553.0		4.6	0.0	0.0	11.8	0.1	0.0	
363.4	363.6	0.0	61.8	6.7	16.9	156.8	33.8	33.8	
27.9	-20.4	60.6	4.3	2.7	4.3	10.9	13.7	8.6	
1.9	-16.1	21.5	3.2	1.9	4.0	8.1	9.6	7.9	
153.4	-26.7	246.0	0.6	0.4	0.3	1.6	2.2	0.6	
	-80.4		0.0	0.1	0.0	0.1	0.5	0.0	
325.0	-99.1	45,244.8	0.0	0.3	0.0	0.0	1.4	0.0	
			0.5	0.0	0.0	1.1	0.0	0.0	
1,347.2	706.6	79.4	9.1	0.6	0.8	23.2	2.9	1.6	
980.9	534.9	70.3	6.7	0.5	0.8	17.0	2.7	1.6	
22,613.6	3,089.7	612.1	2.4	0.0	0.0	6.2	0.2	0.0	
-100.0	-100.0	492.3	0.0	75.2	32.0	0.0	378.6	63.9	
-100.0	-100.0	492.4	0.0	75.2	31.9	0.0	378.6	63.9	
-63.0		-100.0	0.0	0.0	0.0	0.0	0.0	0.0	
	12,881.1		0.0	0.0	0.0	0.0	0.0	0.0	
60.7	1,849.7	-91.8	3.9	0.1	3.1	9.9	0.5	6.1	
	14.4		0.1	0.0	0.0	0.2	0.1	0.0	

23.2		-100.0	2.9	0.0	3.0	7.3	0.0	6.0	
1,238.0	559.1	103.0	0.9	0.1	0.1	2.4	0.4	0.2	
	-100.0		0.0	0.0	0.0	0.0	0.0	0.0	
530.4		-100.0	0.0	0.0	0.0	0.0	0.0	0.0	
	279,711.0		0.6	0.0	0.0	1.6	0.0	0.0	
	#DIV/0!		0.0	0.0	0.0	0.0	0.0	0.0	
	-55.4		0.9	1.0	0.0	2.2	4.9	0.0	
	402.5		0.1	0.0	0.0	0.1	0.0	0.0	
81.3	522.7	-70.9	0.7	0.1	0.5	1.8	0.3	1.0	
64.0	20.4	36.1	2.7	1.1	2.1	6.9	5.8	4.2	
			0.6	0.0	0.0	1.6	0.1	0.0	
	272.4		0.1	0.0	0.0	0.2	0.1	0.0	
			0.1	0.0	0.0	0.2	0.0	0.0	
	26.3		0.0	0.0	0.0	0.1	0.1	0.0	
	-100.0		0.0	0.0	0.0	0.0	0.0	0.0	
	-22.1		0.1	0.0	0.0	0.1	0.2	0.0	
-74.4	-65.7	-25.4	3.4	4.9	16.6	8.5	24.8	33.3	
26.7	-49.6	151.6	100.0	100.0	100.0	253.6	503.4	200.1	
						4,949.5	5,309.1	3,861.0	AFTA
						9,395.1	7,724.7	6,587.1	
						5.1	9.5	5.2	AFTA %
						2.7	6.5	3.0	%

Source: Annual abstracts of General Custom Department

1987

1987

:

-

-

-

16

1991

/20/

1991

1949

58

1958 25

1928 794

:

7

2.25

4

11,00

/ 437 /

1957 / 384 /

% 12-9

1957/7/31

% 6

% 1

,1987

1987

1987

% 70

% 30

.% 9

% 7,5-4,5

1999

54

113

(,)

, -)

, (-

:

-

-

AFTA

WTO

1987 . 1987

Linking import

1987

" with export"

()

% 100 , % 75

, AFTA

()

(1)

()

3 . % 150 % 1

1986 .

1986 19

1987

:

-

-

(, ,)

-

) (, ,)

.(6/2

-

1990 23

(, , ,)

:

%12

-

, (48)

87 . (48)

1967

% 9,5-9 -
 .(2,3) 80
 %1 -
 (10)
 , 1987
 1999 /4/15 dd.-2535/4/9
 ()
 .(1999 7)
 :
 /2/9/9124) % 1-1,9 -
 .(1997/11/29 -
 10 50 -
 .(1999/7/4 /2/9/5333) -
 % 5 -
 .()
 (quota)

7-80

.%

-
-
-
-

:

,1987

1998 / . 11,25) 1991 / 2/ 1989 / 3 /
1997 . / 23 / .(. 42
1996 . / 35 / ,1996
46

23) ,(/ . 11,25

(/

1991 10

1996 1535

1987

.(..... , ,)

1986) , (,) (

1987 .

1988 .

% 90

% 5.5

7.5 -6 ,(. 50,000)

(. 50,000)

% 4.5

.1977

670

-1500

(

)

. 2000

:(-)

.(.....

21)

1999-1998

/ 926/

/760/

1996-1995

/ 3798/

1996 -1995

/ 3462/

.(%

.1999-1998

)

.(

1995

(

)

, . 30,75

: 1999-1995

25,54	1996-1995
27,84	1997-1996
28,04	1998-1997
29,55	1999-1998

		% 16			
%464	1998	23700	1990	4200	
					:
	28,16				0,54
	30,68				0,59
	30,68				0,59
	31,72				0,61
	37,96				0,73
. / 4 / 1988					
. 2	. 2	. 34			1
	:1998		1		
					1,68
					1,74
					1,747
					1,88
					1,82
. / (1,3-1,1)					
1 () 4					
					. / . 21
% 10					

-1995

1

1999

	/ /	1	
1,70		1.58	1996-1995
1.73		1.70	1997-1996
1.58		1.70	1998-1997
1.30		1.70	1999-1998

.(, , ,)

/4/

1998

114 1999

54

:

1998 AFTA

WTO

(Non-tariff barriers)

WTO

:

-

.%1

-

-

-

-

AFTA

WTO

,

,

:

-

-

-

-

-

-

-

-

-

-

				.1
			(3,1)	.2
	.% 9,5-9		(3,2)	.3
				-
				-
2436				-
			. 1994	-
)				-
(1967	84	(-
				-
(-
		E E C.		-
				-
	(1992	379)		-

1-3

1/17		%15
A/1/11	()	%1
A/16/10		%1
A/5/10		%1
B/1/8		%75
2/9		%7
1/9		%30
A/3/4		%15
A/3/4		%15
4/2/A/1/a		%7
1/G/1/7		%1
1/ B/6/7		%30
H/1/12		%1
1/A/1/8		%30
A/4/1		%1
1/2		%7
B/3/4		%7
1/7/15		%7
1/A/10/15		%1
12/15		%7
1/16		%50
1/3	(, ,)	%7
A/3/9		%30
B/3/9		%7
A/4/16	(, ,)	%1
B/4/16		%100

	()
	,
	Tabacum
	()
Kay and its varieties	
	Ammi-Visaga, Its seed and product
Kayaleg and its product	Packtheaka and its product
	Dakkoka and its product

Ervil and its product	
Kashnin and its products	
Vigna Nilotic a varieties and its products	
Marars	
Nomanah and its products	
Wasak and its products	
	Barek

-

: 1.4

2.4

1997 (AFTA)

:

- .1972 •
- . 1975 •
- . 1979 •
- . 1979 •
- . 1990 •
- . 1991 •
- . 1991 •
- . 1994 •
- .2000 •

:

-

(AFTA)

.1999/1/1

%25

1999

1999/10/11

2000

1999/10/12

.(WTO)

2.3.4

, 1999-1998 ,1995-1994 ,1990-1989 :

36,7
 %0.5 , (AFTA) %0,9
 %25.6
 %15 (AFTA)
 %1 53,6
 %0,7 , (AFTA)
 %41 2,1
 %28,2 , (AFTA)

42 1994-1992

- -) 2,1
 -) %44 (-
 %4,7 , %43 (-
 %35
 %1,3

1999

1998

(GDP)

%17,4 %30,9

4 .4

1.4.4

, 1975

, 1994

1999

1999

.(AFTA)

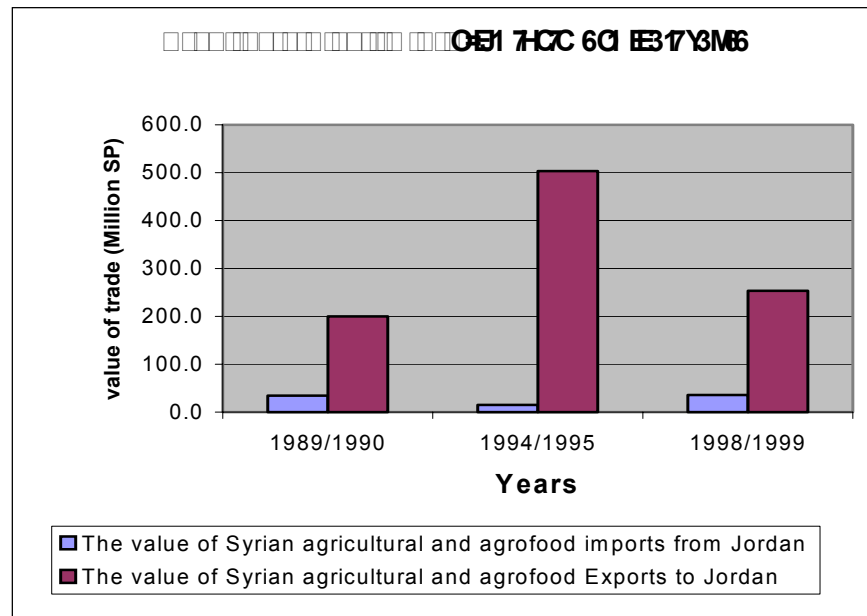
2000

1975

2-4-4

-1989:

.1999-1998 ,1995-1994,1990



)

34,7

(

% 0,5

(AFTA)

% 0,9

200,1

%3 (AFTA)

% 5,1

503,4

15,5

% 131

.% 50

) - :

5.4

% 100 (1995/1994)

-1
-2
-3

:

-1
-2
-3
-4
-5
-6
-7
-8
*

%40

8	7	6	5	4	3	2	1
*	*			*	*	*	1972/4/16
*	*	*		*	*	*	1975/7/23
*	*	*	*	*	*	*	1979/3/10
*	*	*		*	*	*	1979/1/8
*	*	*		*	*	*	1990/12/2
*	*			*	*	*	1991/7/19
*	*			*	*	*	1991/12/17
*	*		*	*	*	*	1994/11/2
*	*		*		*	*	2000/4/2

	.	-	-	-	:
:
	.	-	-	-	:
	, 1991				
					:
	1992				:
					-1
					-2
					-3
					, 1953
					, -
	:1999				
	1999/10/11				
	:				
					/1/
		1999/10/12			%50
		2000/10/12			%10
		2001/10/12			% 10
		2002/10/12			%10

2003/10/12 %10
2004/10/12 %10

.1999/10/12 /1/

:

2000/8/7 /21/

:

1999/10/11 :1

:2

:3

2000/8/14

:

-1

:

.(AFTA) -

-

-

2000/8/17 -2

:

1999/10/11 -

. 2000/8/17

/2/ -

-
-
-

/2/

:

-
-
-
-

/3/

:

-
-
-

: ,1999 3-2 -
.1999/5/20

-
-
-

)

.(AFTA

, 2000/4/3

:

:

-1

/

3000 4/30- 11/15
2000 4/30- 11/15
3000 4/30 - 11/ 1
3000 5/15- 4/1
2000 (5/30-4/1)-(12/31-10/1)
1000 6/30-5/1
2000 2/23 -1/1
2/28 -1/1

:

2000	4/30 - 2/15
4000	4/30 - 3/1
2000	6/30 - 4/15
1000	7/1 - 4/1
2000	12/31 - 10/1
3000	5/15 - 2/10
1000	1/31 - 8/1
1500	8/30 - 6/15
	1/31 - 9/1
1000	7/15 - 7/1
	9/1 - 8/1

:

2000/6/4-3

(1975)

-

.(AFTA)

-

-

-

:

:

5.1.1

66 1998-1960
(A F T A)

:(A F T A)

-1

-2

-3

%10

2.1.5

Arab Common Market (A C M)

1953	-
1964	-
1981	-

1981

(G C C)

.1

.2

.3

-

-

-

-

-

1997

(A F T A)

. 1998

1996

, 1981

1981

/15/

1

.1999

(A F T A)

2.5

1.2.5

,1998/1/1

. 2007/12/31

.1998 /1/1

1998/1/1

()

(AFTA)

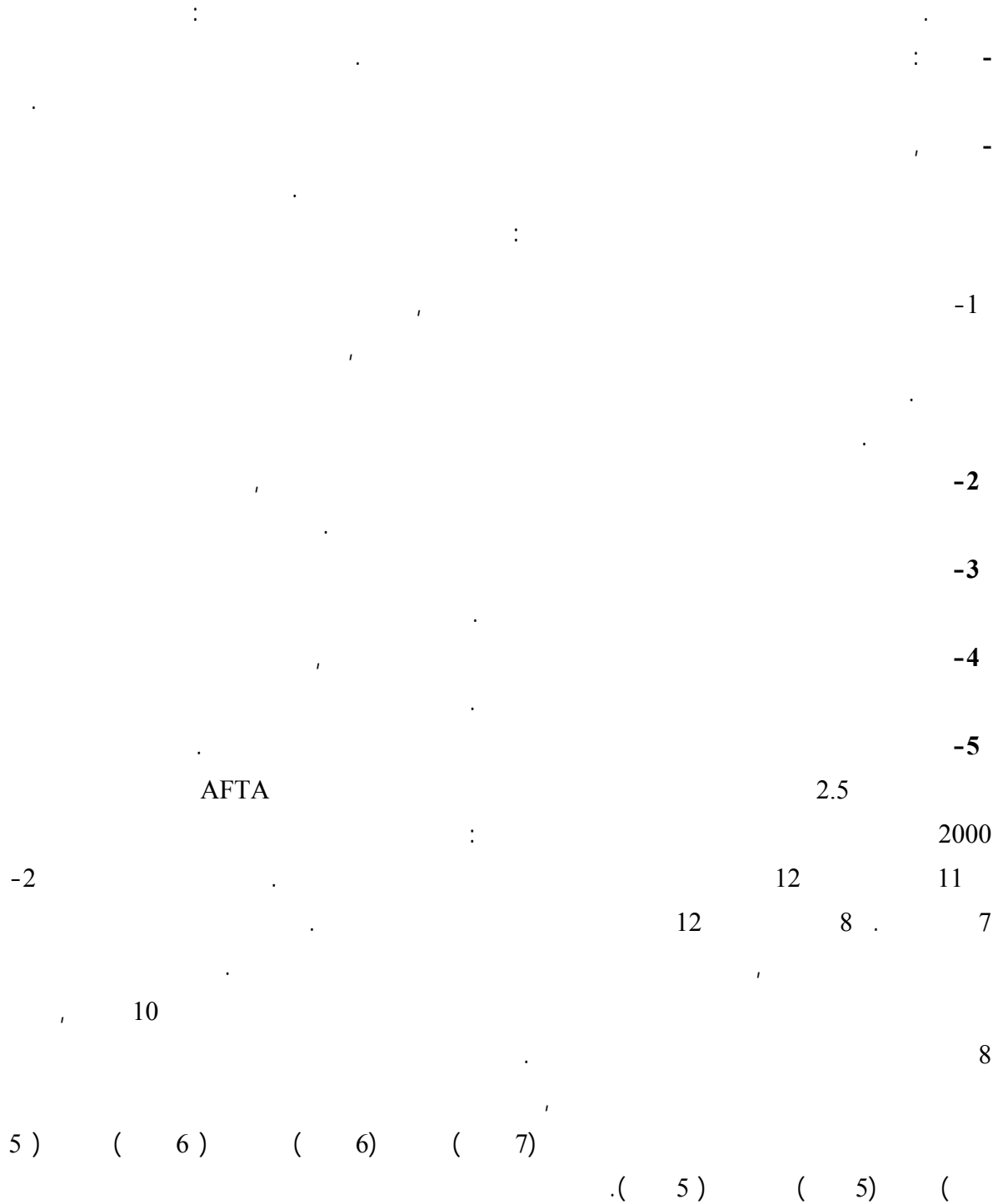
. (WTO)

()

.(AFTA)

(AFTA)

(AOAD)



(AOAD)

WTO

1997

AFTA

WTO

8

.WTO

(

AFTA

5.3

1.3.5

AFTA

AFTA

3.5.2

:
%20

AFTA

AFTA

AFTA

.(NTBs)

1977

WTO

()

1997

.% 90

.% 93

% 96

AFTA

% 5

AFTA

AFTA

1999-1989

AFTA

1999-1998

% 53 AFTA

% 68

(, ,)

2,4,5

% 10

AFTA

% 9

89

1999-1998

%15

AFTA

%

AFTA,

,WTO

AFTA

WTO

.WTO AFTA

AFTA

AFTA

.% 5

% 10

% 30

% 20



.1999	AFTA	1.5	.1
.2000	AFTA	2.5	.2
.AFTA		1,4,5	.3
.	AFTA	2.4.5	.4
	. AFTA 1999/ 1998	1	.5
	. AFTA 1999/1998	2	.6
)	AFTA	3.4.5	.7
		.(
.AFTA		4.4.5	.8
.	AFTA	5.4.5	.9

AFTA

5.1

*	*	*	*	998/ /9	
NO	NO	*	*	998/ /14	
NO	NO	*	*	99/ /10	
*	*	*	*	98/ /6	
-	-	-	-	-	
-	-	-	-	-	
No	*	*	*	998/ 2	
*	*	*	*	98/1/	
*	*	*	*	998/4/	
No	*	*	*	998/9/	
NO	NO	*	*	998/1/	
NO	*	*	*	998/1/	
*	*	*	*	998/1/	
-	*	*	*	98/1/	
-	*	*	*	98/13/	
*	*	*	*	98/13/	
-	(*)	-	(*)	-	
-		-	-	-	

AFTA

1-4-5

101.2	110.8	473.5	103.15	142.2	0	33.7	140.4	108.8	
20.13	11.50	0	0	0	0	0	0	0	
100.77	101.42	81.6	114.79	82.77	103	69.4	55.64	71.27	
0	0	0	0	0	0	0	0	0	
96.2	133	10.8	93.8	7.8	0	0.21	8.78	6.49	
7.24	38.81	0	37.72	0.16	0	1.48	0.04	0.13	
113.36	93.01	73.72	114.4	33.22	0	1.93	13.07	11.23	
98.5	95.87	0	93.11	17.9	0	6.34	2.68	8.1	
118.42	106.28	93.74	102.31	94.24	95.7	38.6	58.76	63.95	
75.8	71.58	0	67.45	4.58	0	0	1.64	6.3	
100	41.06	0	0.88	13.39	0	5.55	0.41	3.63	
63.34	81.02	0	84.6	7.26	0	0.82	99.97	25.42	
100.84	100.79	60.6	91.96	34.56	0	0	45.43	36.7	
48.55	73.9	0	96	0	0	0	0.1	0.01	
100.24	99.72	90.42	99.47	0	9.14	100	44.64	86.09	

(. :)

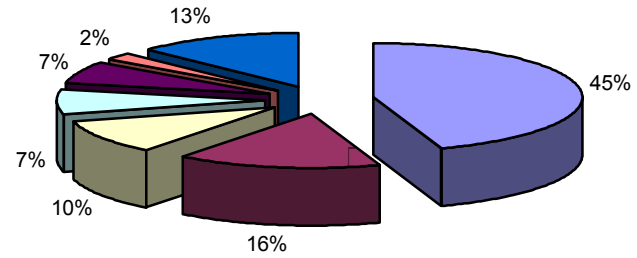
3-4-5

			1999/1998		1995/1994		1990/1989		
1999-1998	1995-1994	1990-1989							
100	99.8	100	71	0	40	0	37	0	
7.1	30.6-	1.7-	328	248	182	343	108	112	
			0	0	0	0	0	0	
75.3	94.0	70.5	254	36	503	15	200	35	
99.2	99.2	99.5	509	2	428	2	53	0	
96.8	95.2	92.9	787	13	2.177	54	990	37	
89	66.9	99.3	23	1	35	7	8	0	
54.9-	12.1	99.6	82	282	210	165	65	0	
67.6	80.0	93.1	122	23	12	1	2	0	
97.9	95.2	99.9	100	1	216	5	315	0	
97.3	92.9	91.3	2.212	30	1.072	40	1.750	80	
100	100	100	97	0	124	0	54	0	
60.7	67.3	85.7	367	90	310	61	311	24	
73.3	76.9	86.2	4.950	762	5.309	692	3.861	287	

AFTA						4.4.5			
						1999/1998	1995/1994	1990/1989	
100 * 1 / 3	100* 2 / 3	100* 1 / 2	3	223	1	3	2	1	
254,3	83,0	306,5	37	50	39	284	343	112	
			0	0	0	0	0	0	
103,3	231,3	44,7	5	2	12	36	15	35	
1,657,7	110,6	1,498,4	0	0	0	2	2	0	
35,2	24,1	146,2	2	8	13	13	54	37	
4,309	19,3	22,309,9	0	1	0	1	7	0	
229,675,8	171,3	134,063,3	37	24	0	282	165	0	
26,488	1,772,0	1,494,8	3	0	0	23	1	0	
605,6	20,1	3,008,5	0	1	0	1	5	0	
37,6	75,5	49,9	4	6	28	30	40	80	
0	0	59,278,4	0	0	0	0	0	0	
373,2	148,0	252,2	12	9	8	90	61	24	
								290	

			AFTA			5,4,5			
			%			%			
	/1989 1990	1995/1994	1999/1998						
	1	2	3	1	2	3	100*1/2	100*2/3	100*1/3
	37	40	71	1	1	1	107,7	179,6	193,4
	108	182	328	3	3	7	168,5	179,9	303,2
	0	0	0	0	0	0	0,0		0,0
	200	503	254	5	9	5	251,6	50,4	126,7
	53	428	509	1	8	10	808,2	118,7	959,7
	990	2,177	786	26	41	16	220	36,1	79,4
	8	35	23	0	1	0	409,8	65,5	268,6
	65	210	82	2	4	2	6, 324	39,1	126,6
	2	12	122	0	0	2	476,5	1,021,4	4,867,3
	315	216	100	8	4	2	68,7	64,4	31,8
	1,750	1,072	2,212	45	20	45	61,3	206,3	126,4
	54	124	97	1	2	2	231,0	78,3	180,9
	311	310	367	8	6	7	99,5	118,5	117,8
	3,861	5,309	4,950	100	100	100	137,5	93,2	128,2

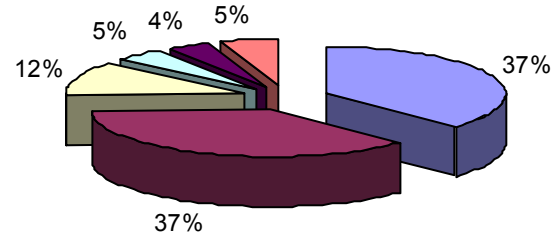
AFTA 1(5'60@1)-@' *2 5
 □□77 □□77 □□*80



■ Saudi-Arabia ■ Lebanon ■ Kuwait ■ U.A. Emirates ■ Egypt ■ Oman&Masqat ■ other

1

أهم شركاء سورية في مجال الاستيراد ضمن إطار AFTA لعامي 1998-1999



■ Egypt ■ Morocco ■ U.A. Emirates ■ Jordan ■ Saudi-Arabia ■ other

The Agricultural Calendar Prepared by Members in AFTA

N	commodity	code	Jordan	Tunisia	Saudi A	Syria	Iraq	Oman	Kuwait	Libya	Egypt	Morocco
			from: to	from: to	from: to	from: to	from: to	from: to	from: to	from: to	from: to	from: to
1	Potato	070190	1/11:31/5	1/9: 30/11 1/2: 31/5	1/12: 30/6	1/4: 31/10		1/2: 31/4 1/11: 31/3	1/10: 30/1 1/8: 31/10	1/6: 31/7 1/12: 28/2	1/12: 31/3 1/3: 31/8	1/5: 31/10
2	Tomato	070100		1/10: 30/4	1/5: 31/8	1/3: 30/6	1/6: 1/12					
3	Onion	070310 071220	1/5: 31/10	1/6: 31/10	1/5: 31/11	1/4: 30/6 1/9: 30/11			1/9: 31/10 1/7: 31/8	1/7: 30/9		
4	Garlic	070320	1/5: 30/9	1/5: 31/10					1/7: 30/9			1/5: 30/11
5	Eggplant	070330			1/6: 31/8							
6	Cabbage	070410						15/12:15/2	1/8: 31/10			
7	Carrot	070610			1/2: 31/5			1/1: 31/3				
8	Cacumber	070700			1/5: 31/8			1/11: 31/3	1/2: 31/3			
9	Bean	070820	1/7: 30/9									1/6: 30/9
10	Artichoke	070910		1/1: 30/4								
11	Hot Pepp	070960		1/1: 30/4								
12	Squash	070990			1/5: 31/8				1/2: 28/2 1/7: 31/8			
13	Okra	070990			1/5: 31/8							
14	Banana	080300	1/3: 31/5 1/11: 31/1					1/7: 31/12				
15	Date	080410					1/8: 1/1	1/11: 31/5		1/8: 30/11		1/7: 31/1
16	Guava	080450										
17	Orange	080510	1/12: 31/3			1/10: 31/3	1/10: 1/4				1/11: 31/5	1/1: 31/5
18	Manderin	080520									1/12: 31/3	
19	Calamond	80520				1/9: 31/1						
20	Lemon	080530	1/11: 31/3			1/9: 29/2		1/6: 30/9				
21	Grape	080610	1/8: 30/10	1/8: 30/11	1/5: 31/8		1/6: 1/12			1/6: 30/9	1/6: 30/9	1/6: 30/9
22	Watermelo	080711		1/4: 30/6	1/5: 31/8	1/5: 31/8		1/4: 30/6			1/5: 31/8	
23	Muskmelc	080719				1/6: 31/7		1/5: 31/7			1/5: 31/8	
24	Apple	080810	1/9: 31/12			1/10: 28/2					1/5: 30/11	1/6: 30/11
25	Pear	080820		1/6: 30/7							15/7: 15/9	
26	Apricot	080910		1/7: 30/9							1/4: 30/6	1/5: 31/7
27	Peach	080930	1/8: 30/9									
28	Green plu	080940										1/5: 31/7
29	Pomegran	081090					1/7: 1/1					

-

1994

()

6.1

6.1.1

1947

23

(1944

)

(ITO)

1946

FAO :

:

,1993 1947
(1993-1986)

23	1947	
33	1949	
34	1950	
22	1956	
45	1961-1960	
48	1967-1962	
99	1979-1973	
118	1993-1986	

2-1-6

-1

-2

-3

-4

1988-1986

1988-1986

%15 : %36 :

%10 : %24 :

:

1988-1986

(tariff rate quota)

:

تحويل القيود الغير جمركية إلى قيود جمركية, سقف التعريفه, و التخفيض المطبق عليهم

▪

▪

() %36

▪

%15

▪

▪

% 5

▪

▪

% 5

▪

▪

%5 % 3

▪

التدابير الوقائية و الاستثناءات و المعاملة الخاصة

وضعت ميكانيكية وقائية مؤقتة وخاصة للمنتجات الزراعية الخاضعة للتعريفه , على أن تطبق هذه الميكانيكية في حال زاد حجم الاستيراد أو انخفض سعر الاستيراد بما يزيد عن مستوى الانطلاق الخاص.

▪

(10)

▪

%10 (%24)

▪

سنة الأساس و فترة التطبيق

1988 - 1986

(10)

1995

6 :

aggregate)

(Measure Support AMS

% 13.3

% 20)

(

1995

.(1988-1986)

()
:

- 1
- 2
- 3
- 4
- 5
- 6

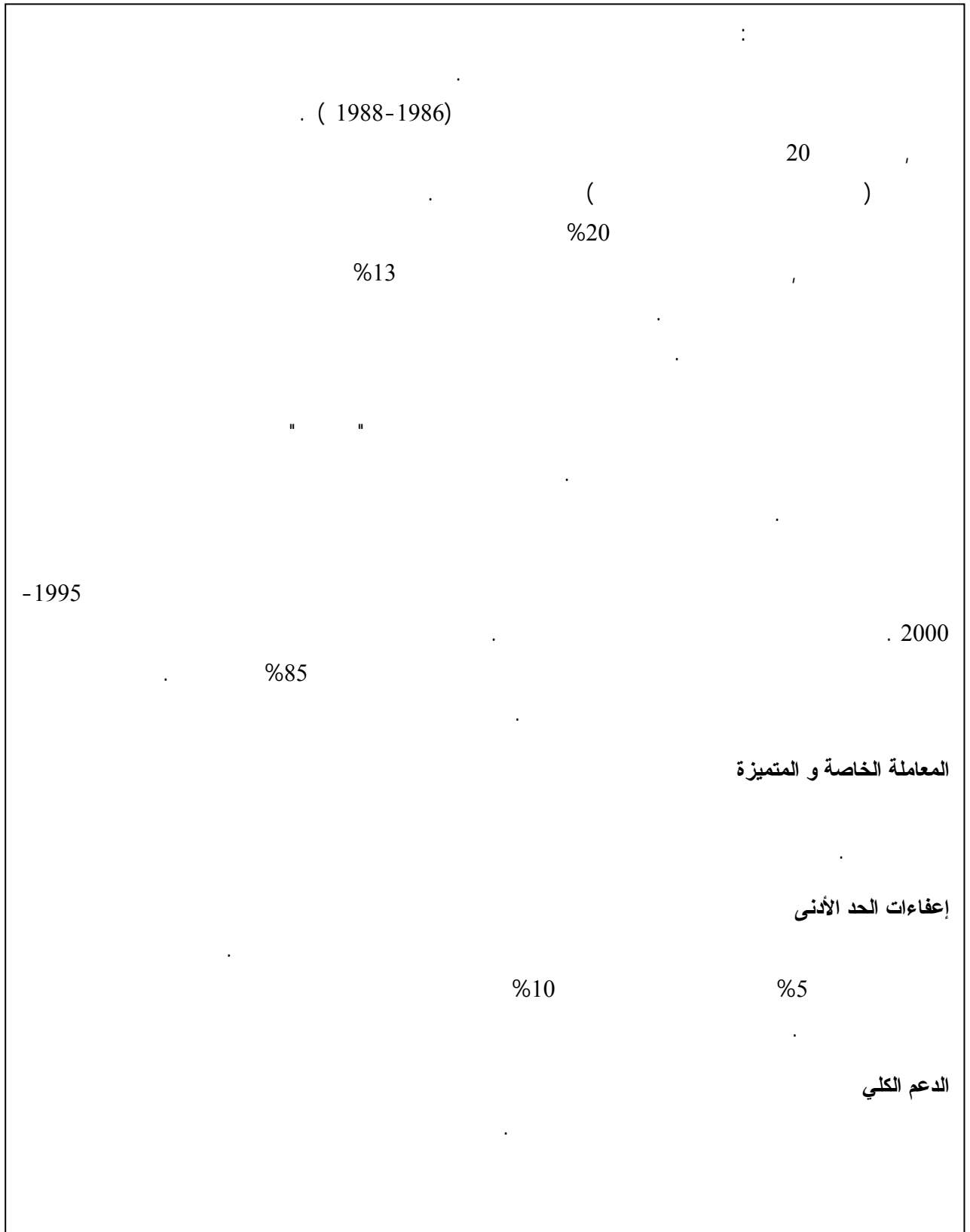
(land set aside program)
(deficiency payment)

%85

%10

% 5

:



25

. 2001/2000– 1996/1995
, 1990-1986

%36 %21
. 2000 1995

%24 %14

. 2005-1995

10

(1988-1986)

.(1990-1986)

%40

(bound tariff rate) ¹

, 2000

1999

, 2001

20

(bound tariff rate)

(WTO) 2-6

1-2-6

15

International Trade organization (I T O)

() -1
-2

1994

(WTO)

2-2-6

-1986

1995

140 /2000 /

.1994

500

-1

-2

-3

(1999 ,1998 ,1996)	
<p>1</p> <p>(</p> <p>:(TRIPS)</p>	

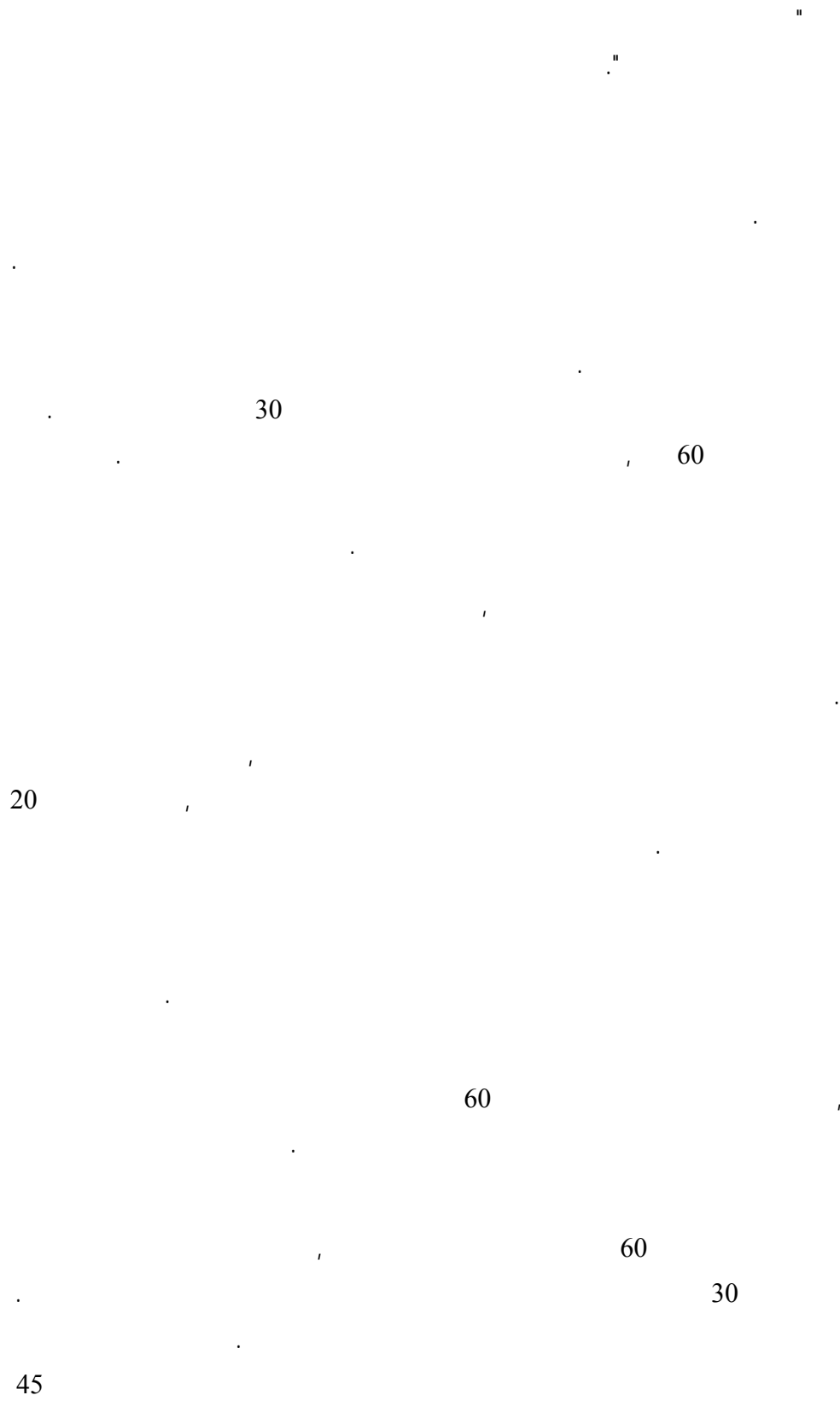
:	()

Libreville 2000, WTO OMC, World Trade Organization: Structure-Function-Transparency. Meeting of :
 African Ministries 13-15 November 2000.

.1947	

Libreville 2000, WTO OMC, World Trade Organization: Structure-Function-Transparency. Meeting of :
 African Ministries 13-15 November 2000.

.1998



:

:

:

13 ,1986

3-2-6

1947

(Kyrgyz Republic)

31 . 2000

140

(, , ,)

%0.5

%1

%1

%4

5-2-6

(PTA) :

(FTA) :

(CU) :

(Common External Tariff CTA)

-3.6

-1.3.6

Most Favor)

(Nation

-2.3.6

-

()

:

References

- Agreement establishing The World Trade Organization (All Articles) Annual abstracts of General Custom Department
- Arab Currency Fund, Economic Policies Institute (1997), Policies and Administration of Exchange Rate in Arab Country (in Arabic)
- Arab Organization for Agricultural development Alkhartoum, 1998, *Studying the Possibility of Arab Gricultural Integration within the Context of Establishing Arab Free Trade*
- Atieh El Hindy, 1996, *Analysis and Assessment of the Syrian Agricultural Policies* (in Arabic).
- CEFIC Statement (07/1996) related to Bilateral and Regional Agreements
Chaherli N & El-Said M (2000), *The WTO and MENA Agriculture* Economic Research Forum {private} For the Arab countries, Iran and Turkey &The World Bank.
- Diao X et al (1999)*, What is the cause of Growth in Regional Trade: Trade 99-1 Liberalization or Rat's? The case of Agriculture; *ISSN 1098-9218 Working Parties 99-1*.
- FAO, Country profile (1999), *The State of Food and Agriculture in Syria, Damascus*
FAO, Rome, (1998), The Implication of the Uruguay Round Agreement on Agriculture for Developing Countries ;A training manual for Agricultural planning N.41.
- Gamo P et al. (1997.)*, Adjusting to new Realities MENA, the Uruguay Round, and the EU-Mediterranean Initiative ;*Authorized for distribution by Mohamed A, EL-Erian*
- Garcia J (1999)*, MC and international Trade Issue. WTO and the Euro-Mediterranean relations.
- Habib M. 2000*, *Syrian economy and the Mediterranean EU associations' needs. Syrian association of economic science .*
- Hamdan K. (2000)*, The Syrian &Lebanon cooperation and coordination *Syrian Association of Science and Economy.(in Arabic)*
- Hamdi, Salem (2000)*, *Impact of Policy Reform on Consumers and Food Security in Syria*
- Krueger A (1999)*, the Developing Countries and the Next Round of Multilateral trade Negotiation; *Blackwell publisher ltd, 108 cowley road, Oxford ox4Ijf, UK. And 350 Main Street, Malden, MA, 02148,USA.*
- Langhammer R& Luck M (1999)*, WTO Accession Issues; Blackwell publishers Ltd , 108 cowley Road , Oxford OX4 ijf, UK, and 350 Main Street, Malden, M 02148,USA.

Legal Text, The WTO agreements.

Liu J and Cheng G. (1999), Entry into WTO and Chinas 'Agriculture: consequences and countermeasures ;Forum on agricultural policies in non-member countries.

Libreville 2000, WTO OMC, World Trade Organization: Structure – Function – Transparency. Meeting of African Trade Ministries 13 –15 November2000

Libreville 2000, WTO OMC, Understanding on rules and procedures governing the settlement of disputes. Meeting of African Trade Ministries 13 –15 November2000

Michalopoulos C, (1999), The Developing Countries in the WTO Blackwell publishers Ltd, 108Cowley Road, oxford Jif, UK. And 350 Main Street, Malden, MA 02148,USA.

Minyard A The world trade organization :History , Structure, and Analysis.

Miner W.M (1998), The international policy environments for agricultural trade negotiations

Economic and Policy Analysis Directorate Policy Branch.

Page Sh. 2000, Helping the ACP to Integrate into the World Economy : Current Challenges in Trade Commitments and Negotiations ; Geneva; ECDPM publication.

Rathi Sh.M.2000, Regional trade agreements can lead to multilateral agreements , say experts; Earth Times News Service.

Strichele M. V. November 1996, The Ministerial Conference in Singapore and the Developing Countries, an introduction ; WTO Booklet Series Volume 1 Transnational Institute .

Text of Agreements with Lebanon and Jordan and supreme Committee minutes of meeting which related to Economic Cooperation between Syria and second parties.

Trade Research Series (1998), The international Policy Environment for Agricultural trade Negotiation Economic &Policy Analysis Directorate Policy Branch.

USDA, Regional trade agreement and MS agricultural No.171.

USDA, Regional trade agreement and U.S agriculture, An economic research service report , Agriculture Economic Report N.771.

USDA, 1998, Agriculture in the WTO, International agriculture and trade reports. Economic research service, WRS- 98-4

Wally J. Special and Differential Treatment in the Millennium Round.

World Bank Group, Preface [www. World Bank .org/wbi/mdf/mdfi/perface.htm](http://www.WorldBank.org/wbi/mdf/mdfi/perface.htm).

WTO-Official ministerial website-about the ministerial –accessions 1997, Members and Accession, becoming a member of the WTO; Netscape Communication Cooperation .

WTO News : speeches- DG Mike Moore 1999, Challenges for the global trading System in the new millennium.

WTO Trade topics; Regional Trade Agreements- Friend of foe?

WTO website 1998, WTO accession; The George Washington University, Elliot School of International Affairs.

W.M.Miner Number 1.2001, An Overview of the issues and positions of the Major Countries in the WTO Negotiation; The Estey Center Journal of International Law and Trade Policy.

Yang Y. (1998), Completing the WTO Accession Negotiation: Issues and challenges
Zarrauk Jamel, 1998, Arab Free Trade Area potentialities and effects Mediterranean. Development Forum Marrakech, Morocco.

Zarrouk J and Zallio F (2000), Integrating Free Trade Agreement